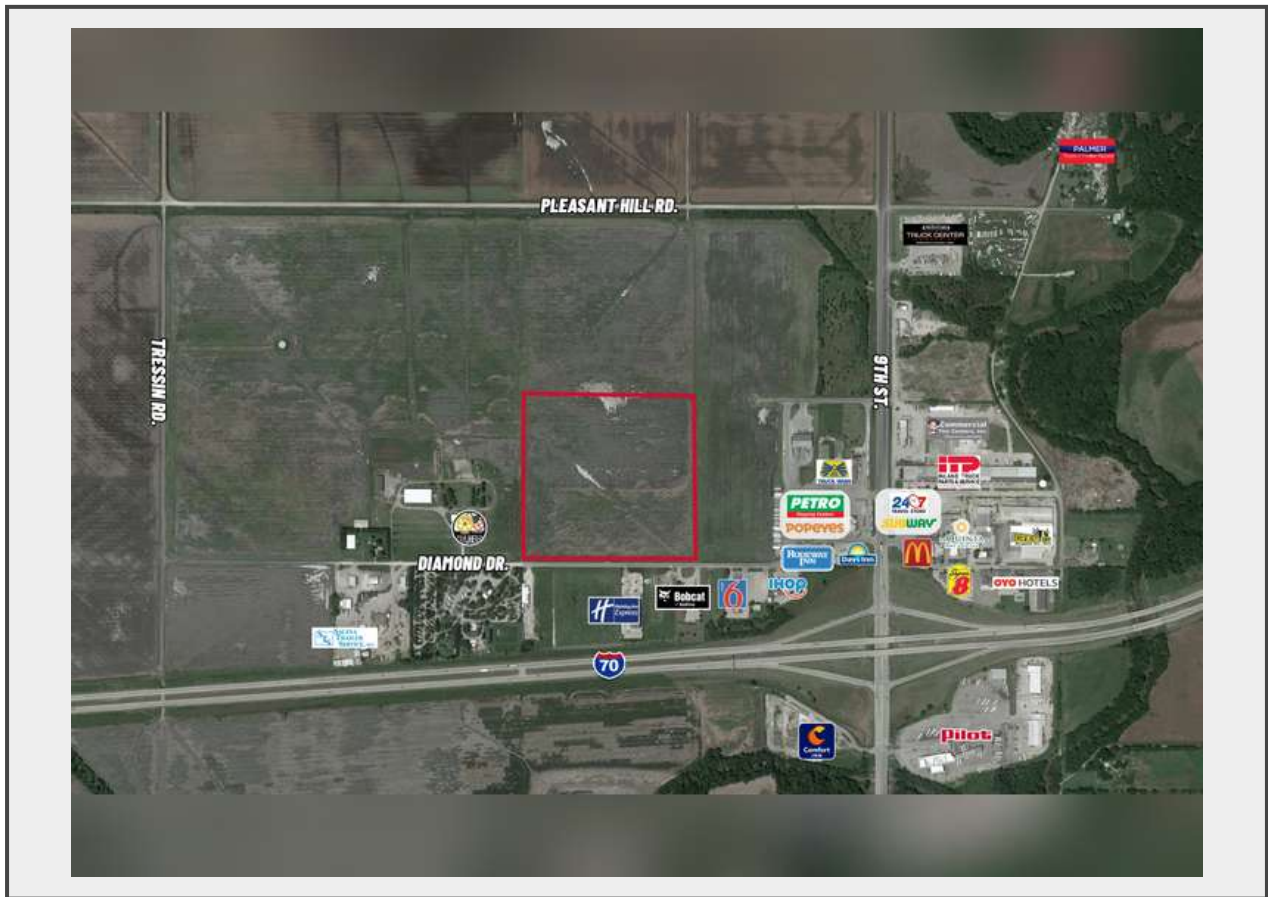


**Sale Name:** Salina Multi-Parcel Development Land

**LOT - #4 - Diamond Dr. & 9th St., W of NWc, Salina, KS**



### Description

## Diamond Dr. & 9th St., W of NWc, Salina, KS

**Online Only: Auction Ends Tuesday, November 16, 2021 @ 1 PM**

**SITE SIZE:** 35± Acres

**ZONING:** Commercial & Industrial

**2020 TAXES:** GENERALS: \$448.78 | SPECIALS: To Start in 2024 (or platted/developed)

### PROPERTY HIGHLIGHTS:

- Development land with potential for industrial, service or distribution.
- Near 4-way interchange with I-70.
- One mile east of the I-70 intersection with I-135.
- Area businesses include major truck stops including Petro, 24/7 Travel Store and Flying J; Holiday Inn Express, Motel 6, Rodeway Inn, LaQuinta Inn & Suites, Super 8, IHop, McDonald's, Subway, Inland Truck Parts, Freightliner Truck Center and Blue Beacon Truck Wash.

**Quantity:** 35



**AUCTION**

<https://www.weigandauctions.com/>