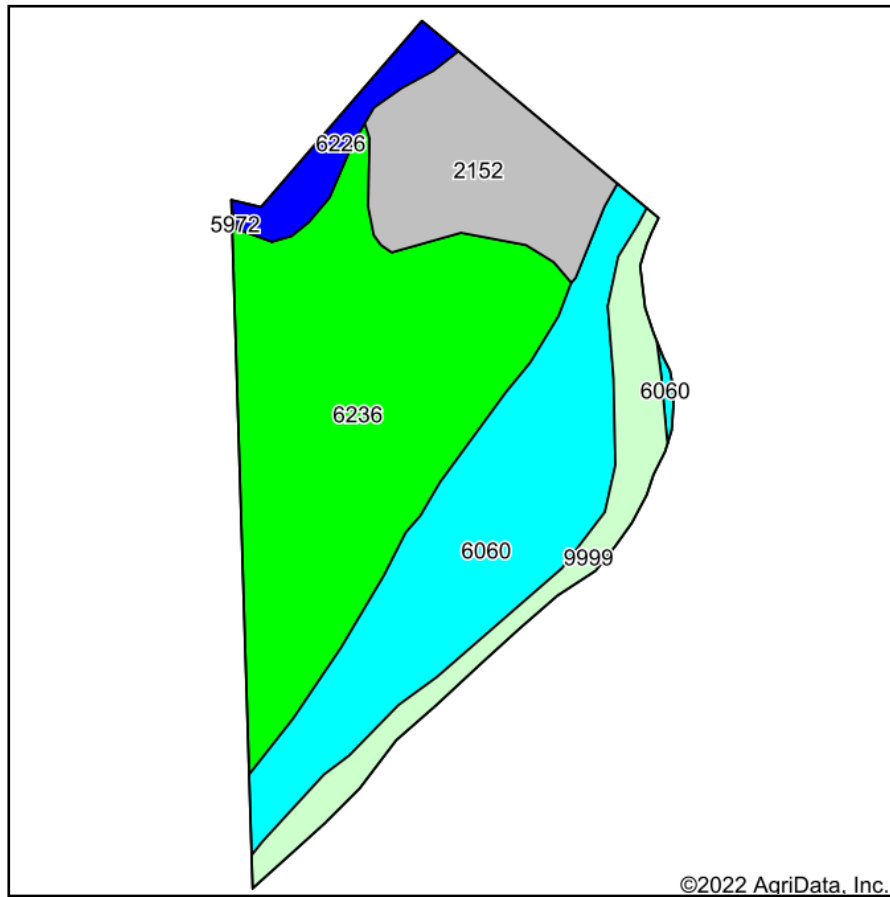
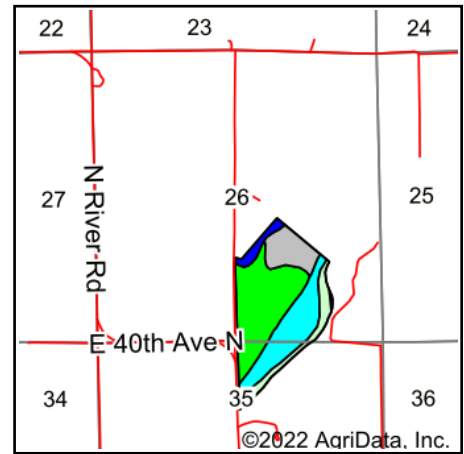


Soils Map



Soils data provided by USDA and NRCS.



State: **Kansas**
 County: **Sumner**
 Location: **26-31S-2E**
 Township: **Palestine**
 Acres: **88.4**
 Date: **4/25/2022**



Maps Provided By:



Area Symbol: KS191, Soil Area Version: 18

Code	Soil Description	Acres	Percent of field	Non-Irr Class Legend	Non-Irr Class *c	Irr Class *c	Range Production (lbs/acre/yr)	Alfalfa hay Tons	Corn Bu	Corn Irrigated Bu	Grain sorghum Bu	Improved bermudagrass AUM	Soybeans Bu	Soybeans Irrigated Bu	Winter wheat Bu
6236	Dale and Reinach silt loams, rarely flooded	38.12	43.1%		I		5978	5	30	80	56	9	15	25	36
6060	Lincoln soils, frequently flooded	24.81	28.1%		VIw		2277								
2152	Lesho clay loam, occasionally flooded	12.70	14.4%		IIIw	IIIw	5100								
9999	Water	9.03	10.2%				0								
6226	Canadian sandy loam, rarely flooded	3.74	4.2%		Ile		6039	4	54	139	50	9			30
Weighted Average					2.63	0.43	4205.1	2.3	15.2	40.4	26.3	4.3	6.5	10.8	16.8

*n: The aggregation method is "Weighted Average using all components"

*c: Using Capabilities Class Dominant Condition Aggregation Method

Soils data provided by USDA and NRCS.