

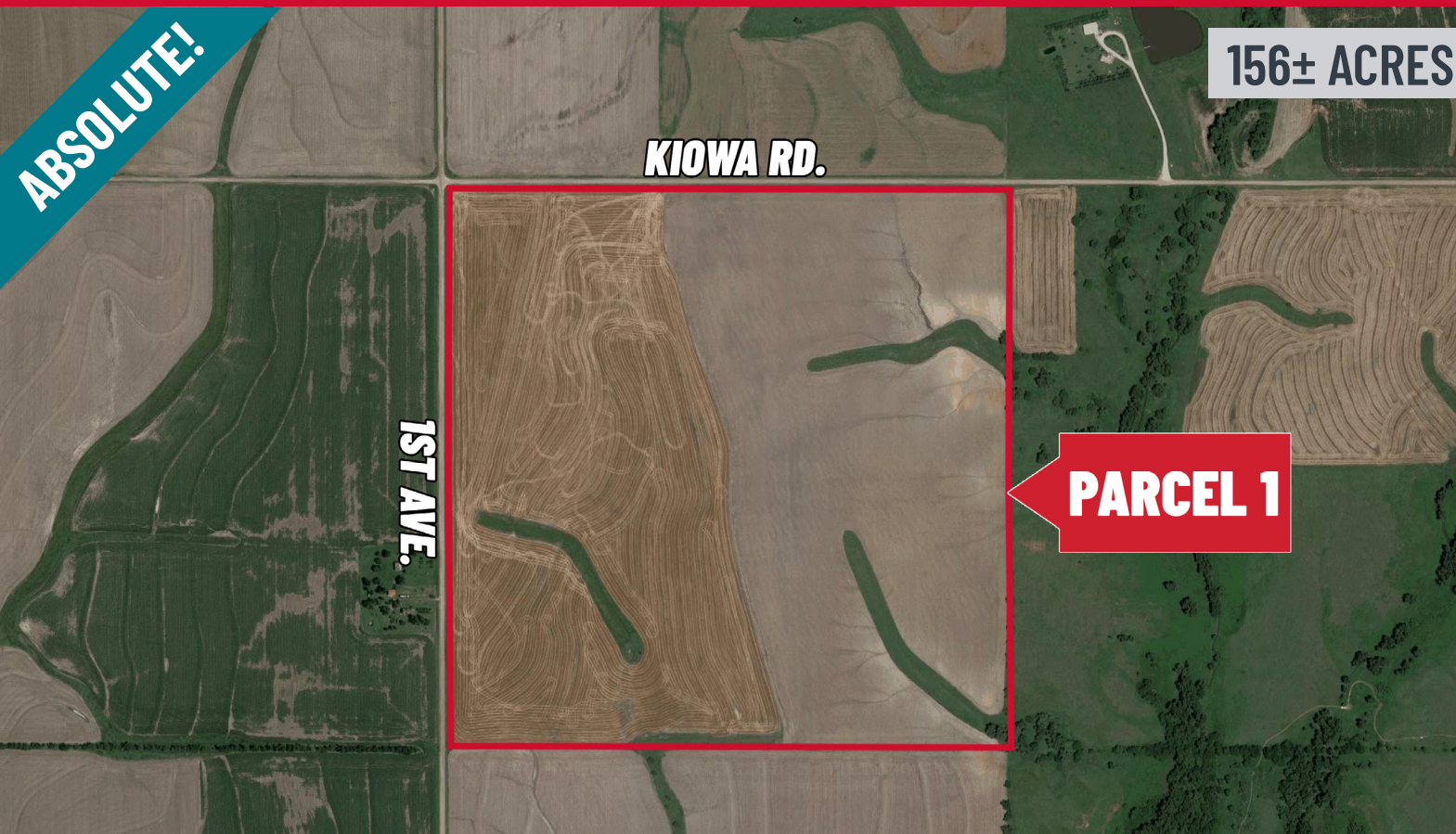
WEIGAND LAND AUCTION

Friday, May 21, 2021 @ 10:00 AM CDT

Auction Location: Windom Elementary School, 101 Olive Ave E, Windom, KS

LIVE WITH ONLINE BIDDING Register to Bid online at [WeigandAuctions.com](https://www.WeigandAuctions.com)

Sellers: Ineta Ruth Studebaker Revocable Trust & John Thomas Studebaker Revocable Trust



PARCEL 1: Kiowa Rd. & 1st Ave., Windom, KS

Legal: Northwest Quarter of Section 32, Township 19 South, Range 5 West of the 6th P.M., McPherson County, Kansas

SITE ACRES
156± ACRES

2020 TAXES
GENERALS: \$1,775.48

FSA INFORMATION

CROP	BASE ACRES	PLC YIELD
Wheat	87.32	48
Grain Sorghum	44.19	70
Soybeans	17.68	31

For more information, please visit our website at [WeigandAuctions.com](https://www.WeigandAuctions.com) or contact us at 316-262-6400.

SOIL DATA
Code 3801 Class IIe:
75.25 Acres (47.5%)

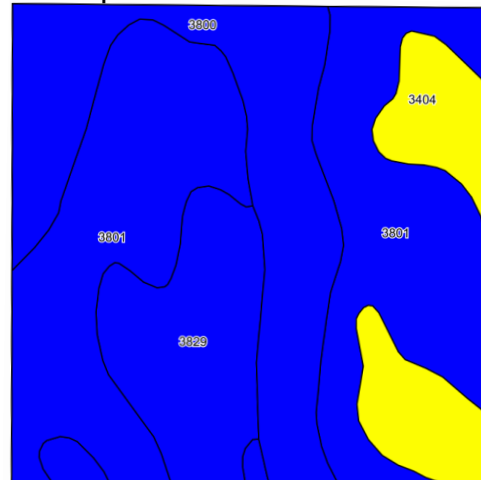
Code 3800 Class IIIs:
39.16 Acres (24.7%)

Code 3829 Class IIe:
25.24 Acres (15.9%)

Code 3404 Class IVe:
18.81 Acres (11.9%)

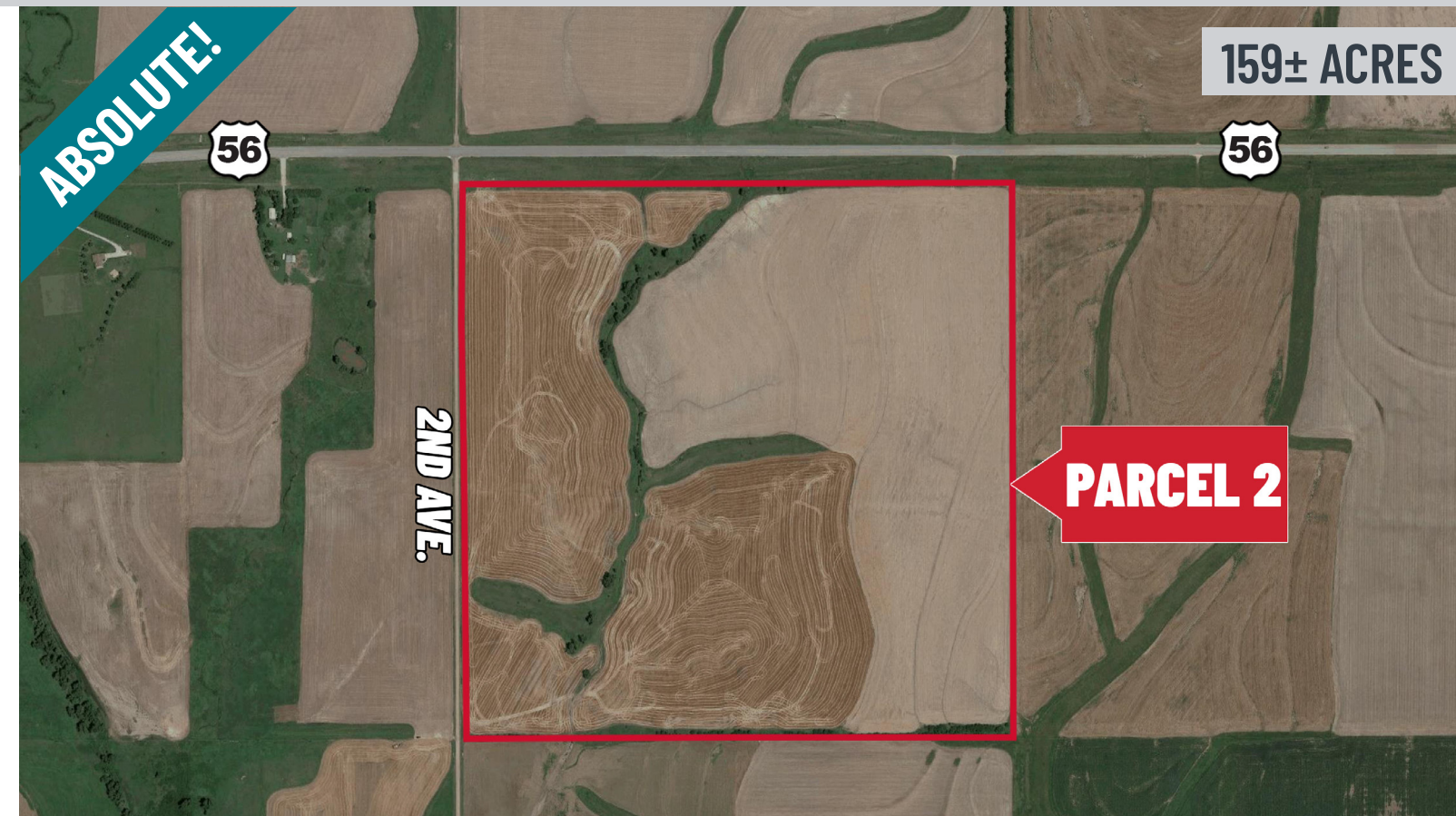
Approx. 95% Tillable

Soils Map



Soils data provided by USDA and NRCS.

©2021 AgriData, Inc.



PARCEL 2: Hwy. 56 & 2nd Ave., Windom, KS

Legal: Northwest Quarter of Section 28, Township 19 South, Range 5 West of the 6th P.M., McPherson County, Kansas

SITE ACRES
159± ACRES

2020 TAXES
GENERALS: \$1,779.50

FSA INFORMATION

CROP	BASE ACRES	PLC YIELD
Wheat	84.17	48
Grain Sorghum	42.60	70
Soybeans	17.04	31

For more information, please visit our website at [WeigandAuctions.com](https://www.WeigandAuctions.com) or contact us at 316-262-6400.

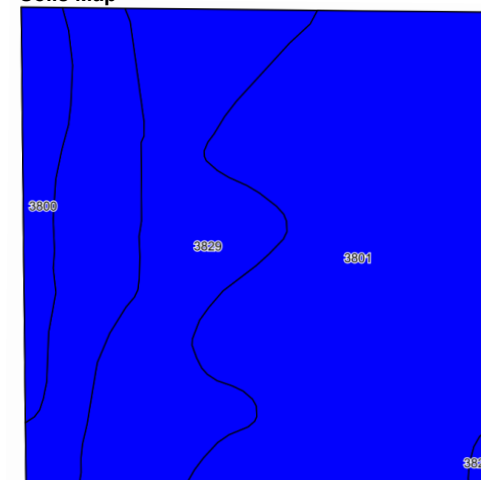
SOIL DATA
Code 3801 Class IIe:
113.43 Acres (67.7%)

Code 3829 Class IIe:
43.32 Acres (25.9%)

Code 3800 Class IIIs:
10.80 Acres (6.4%)

Approx. 90% Tillable

Soils Map



Soils data provided by USDA and NRCS.

©2021 AgriData, Inc.



J.P. Weigand & Sons, Inc. - Auction Division
150 N. Market Wichita, KS 67202 | [WeigandAuctions.com](https://www.WeigandAuctions.com)



Kevin Howell, Auctioneer
316-292-3971 | khowell@weigand.com

Grant Tidemann, SIOR
316-292-3908 | tidemann@weigand.com

AUCTION PROCEDURE: This will be an Absolute Auction. The 2 parcels will sell separately. AUCTION TERMS: The successful bidder will be required to make a deposit in the amount equal to 10% of the total purchase price as earnest money in the form of Certified or Personal Check with proper identification on auction day. Closing will take place on or before 30 days following the day of auction. IMPORTANT NOTICE TO ALL BIDDERS: All the information contained in this brochure was obtained from sources believed to be correct but is not guaranteed. This property will be sold "as is, where is" and bidders shall rely on their own information, judgment, and inspection of the property and records. This property will be sold subject to any application Federal, State, and/or Local Government Regulations. BROKER PARTICIPATION: At the completion of a successful closing, a fee of 1% will be paid by J.P. Weigand & Sons, Inc. to the broker properly registering and representing the successful bidder. Please visit www.WeigandAuctions.com for a detailed explanation of Terms and Conditions.

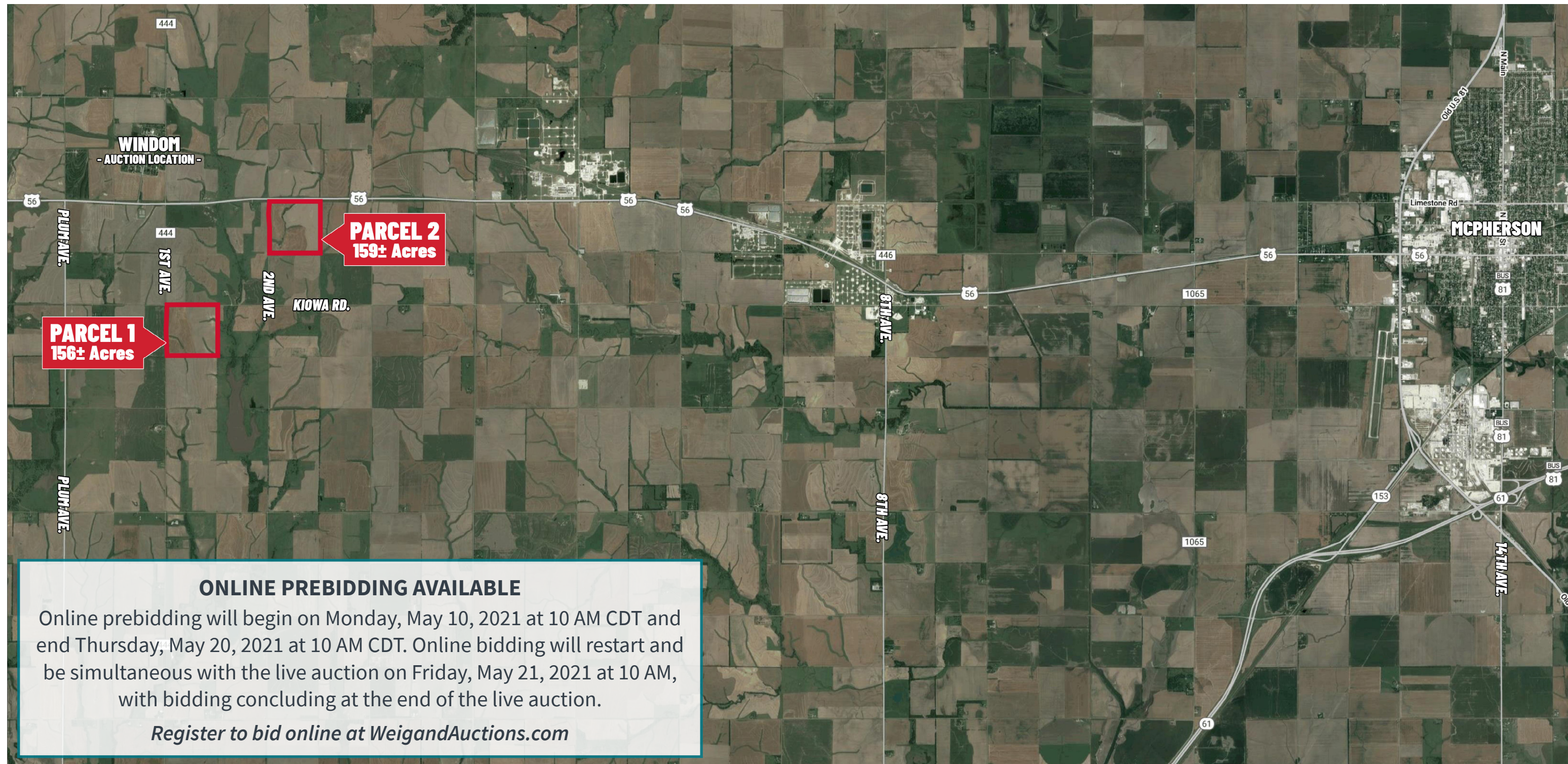
WEIGAND LAND AUCTION

Friday, May 21, 2021 @ 10:00 AM CDT

Auction Location: Windom Elementary School, 101 Olive Ave E, Windom, KS

LIVE WITH ONLINE BIDDING Register to Bid online at [WeigandAuctions.com](https://www.WeigandAuctions.com)

Sellers: Ineta Ruth Studebaker Revocable Trust & John Thomas Studebaker Revocable Trust



J.P. Weigand & Sons, Inc. - Auction Division
150 N. Market Wichita, KS 67202 | [WeigandAuctions.com](https://www.WeigandAuctions.com)



Kevin Howell, Auctioneer
316-292-3971 | khowell@weigand.com

Grant Tidemann, SIOR
316-292-3908 | tidemann@weigand.com

AUCTION PROCEDURE: This will be a Absolute Auction. The 2 parcels will sell separately. AUCTION TERMS: The successful bidder will be required to make a deposit in the amount equal to 10% of the total purchase price as earnest money in the form of Certified or Personal Check with proper identification on auction day. Closing will take place on or before 30 days following the day of auction. IMPORTANT NOTICE TO ALL BIDDERS: All the information contained in this brochure was obtained from sources believed to be correct but is not guaranteed. This property will be sold "as is, where is" and bidders shall rely on their own information, judgment, and inspection of the property and records. This property will be sold subject to any application Federal, State, and/or Local Government Regulations. BROKER PARTICIPATION: At the completion of a successful closing, a fee of 1% will be paid by J.P. Weigand & Sons, Inc. to the broker properly registering and representing the successful bidder. Please visit www.WeigandAuctions.com for a detailed explanation of Terms and Conditions.