

WEIGAND MULTI-PROPERTY ONLINE AUCTION

429 N. LINDEN, BELLE PLAINE, KS

Bidding Ends March 31, 2021 @ 2 PM CDT

Auction Held Online Only



ONLINE ONLY

Register & Bid online at WeigandAuctions.com



SITE SIZE
4,145 SF

BUILDING SIZE
2,894 SF

YEAR BUILT
1950

ZONING
C-1 SPECIAL
COMMERCIAL DISTRICT

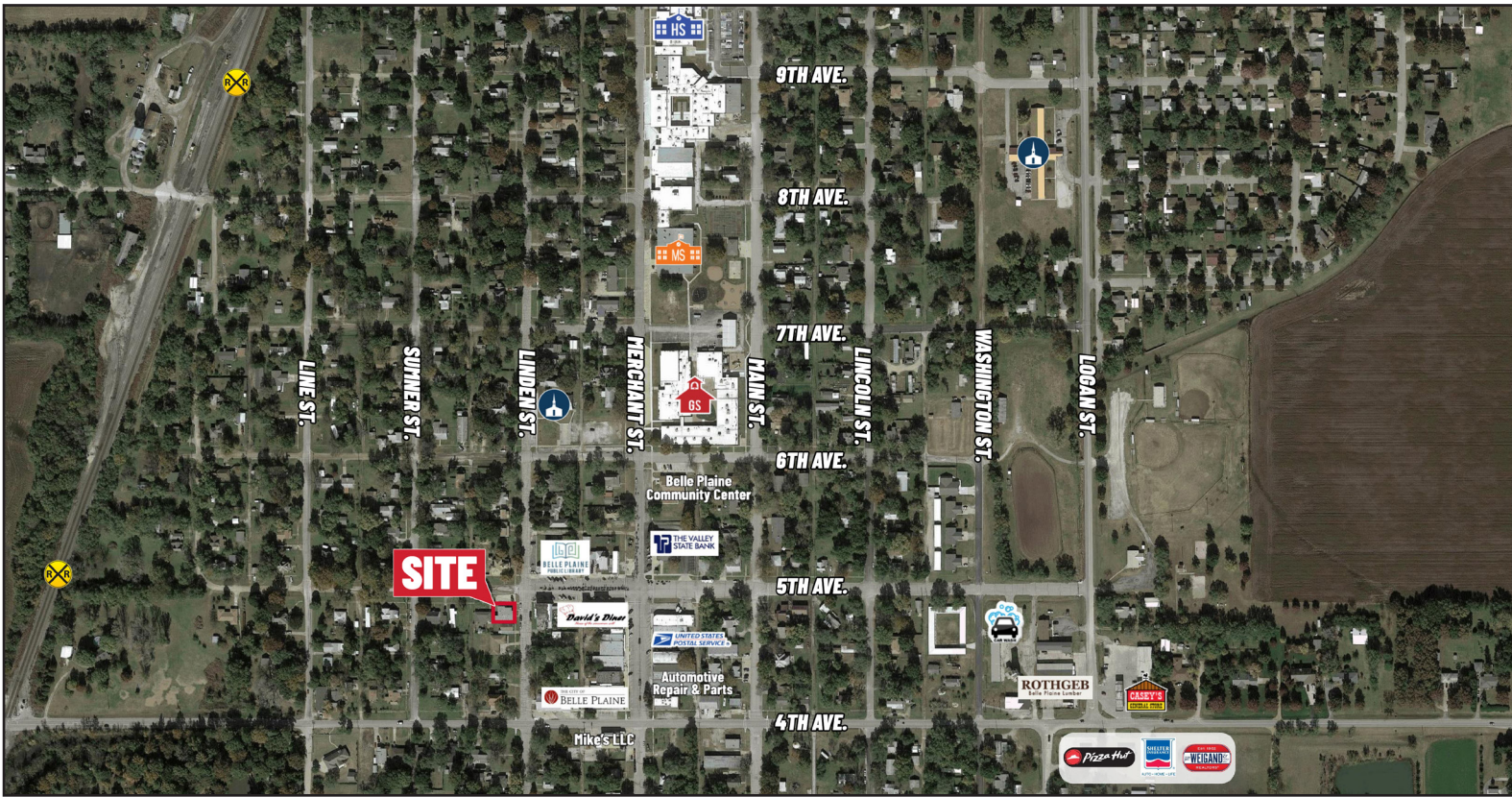
2020 TAXES
GENERALS: \$3,071.66
SPECIALS: \$0.00

PROPERTY HIGHLIGHTS

- Medical office located in Belle Plaine, KS.
- Excellent satellite office opportunity.
- Remaining dental equipment included.
- Potential redevelopment for other uses.
- Large reception, 3 private offices, kitchen, 2 laboratories, 7 exam rooms and 4 bathrooms.
- All exam rooms include built-in sinks.
- Building also includes a basement.
- Paved parking lot.

DEMOGRAPHICS	3 MILES	5 MILES	10 MILES
POPULATION	2,112	3,082	20,555
AVG. HH INCOME	\$79,147	\$84,097	\$87,383
MEDIAN AGE	37.6	39.1	38.5

For more information, please visit our website at www.WeigandAuctions.com or contact us at 316-262-6400.



J.P. Weigand & Sons, Inc. - Auction Division
150 N. Market Wichita, KS 67202 | WeigandAuctions.com



Kevin Howell, Auctioneer
316-292-3971
khowell@weigand.com

Ben Gartner, CCIM
316-292-3967
bgartner@weigand.com

Grant Tidemann, SIOR
316-292-3908
tidemann@weigand.com

AUCTION PROCEDURE: All properties will be a Reserve Auction and are subject to Seller acceptance of bid. Online bidding is by approval only. Bidders must provide a proof of funds letter from a bank to participate in online bidding. **BUYER'S PREMIUM:** A buyer's premium of 10% of the final bid will be added to the final bid price to determine the total purchase price. **AUCTION TERMS:** The successful bidder shall be required to make a deposit in the amount equal to 10% of the total purchase price as earnest money in the form of Certified or Personal Check with proper identification within 24 hours of close of auction. Closing will take place on or before 30 days following the day of auction. **IMPORTANT NOTICE TO ALL BIDDERS:** All the information contained in this brochure was obtained from sources believed to be correct but is not guaranteed. This property will be sold "as is, where is" and bidders shall rely on their own information, judgment, and inspection of the property and records. This property will be sold subject to any application Federal, State, and/or Local Government Regulations. **BROKER PARTICIPATION:** At the completion of a successful closing, a fee of 3% of the buyer's premium will be paid by J.P. Weigand & Sons, Inc. to the broker properly registering and representing the successful bidder. Please visit www.WeigandAuctions.com for a detailed explanation of Terms and Conditions.

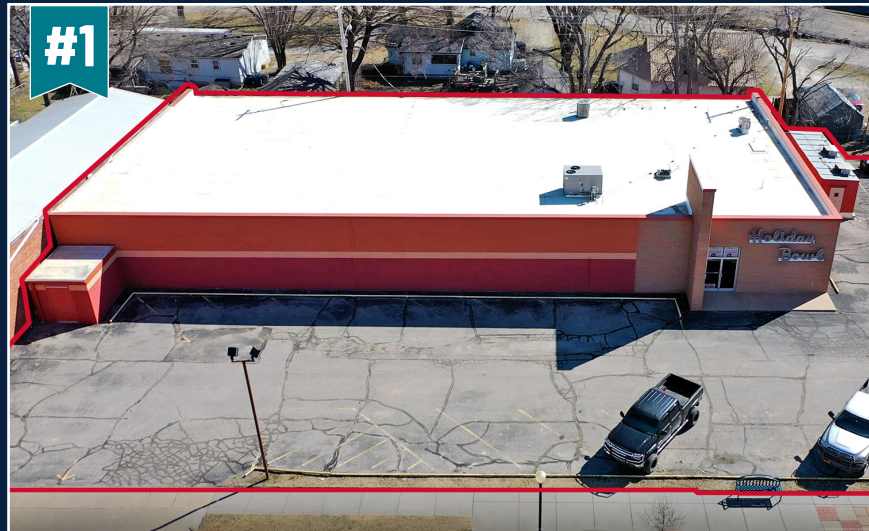
WEIGAND MULTI-PROPERTY ONLINE AUCTION



AUCTION DIVISION

ONLINE ONLY

Register & Bid online at [WeigandAuctions.com](https://www.WeigandAuctions.com)



310 STATE ST., AUGUSTA, KS
Ends at 10:00 AM CDT

**ALL AUCTIONS END
Wednesday, March 31, 2021**

#1 Turn-Key Bowling Alley

#2 Class A Office w/Industrial Space

#3 Two-Story Office Building w/Basement

#4 Neighborhood Office Building

#5 Medical Office w/Dental Equipment Included



300 E. INDUSTRIAL, SEDGWICK, KS
Ends at 11:00 AM CDT



335 N. WASHINGTON, HUTCHINSON, KS
Ends at 12:00 PM CDT



1411 N. ST. PAUL, WICHITA, KS
Ends at 1:00 PM CDT



429 N. LINDEN, BELLE PLAINE, KS
Ends at 2:00 PM CDT



AUCTION DIVISION



J.P. Weigand & Sons, Inc. - Auction Division
150 N. Market Wichita, KS 67202 | [WeigandAuctions.com](https://www.WeigandAuctions.com)



Kevin Howell, Auctioneer | 316-292-3971 | khowell@weigand.com

AUCTION PROCEDURE: All properties will be a Reserve Auction and are subject to Seller acceptance of bid. Online bidding is by approval only. Bidders must provide a proof of funds letter from a bank to participate in online bidding. **BUYER'S PREMIUM:** A buyer's premium of 10% of the final bid will be added to the final bid price to determine the total purchase price. **AUCTION TERMS:** The successful bidder shall be required to make a deposit in the amount equal to 10% of the total purchase price as earnest money in the form of Certified or Personal Check with proper identification within 24 hours of close of auction. Closing will take place on or before 30 days following the day of auction. **IMPORTANT NOTICE TO ALL BIDDERS:** All the information contained in this brochure was obtained from sources believed to be correct but is not guaranteed. This property will be sold "as is, where is" and bidders shall rely on their own information, judgment, and inspection of the property and records. This property will be sold subject to any application Federal, State, and/or Local Government Regulations. **BROKER PARTICIPATION:** At the completion of a successful closing, a fee of 3% of the buyer's premium will be paid by J.P. Weigand & Sons, Inc. to the broker properly registering and representing the successful bidder. Please visit www.WeigandAuctions.com for a detailed explanation of Terms and Conditions.

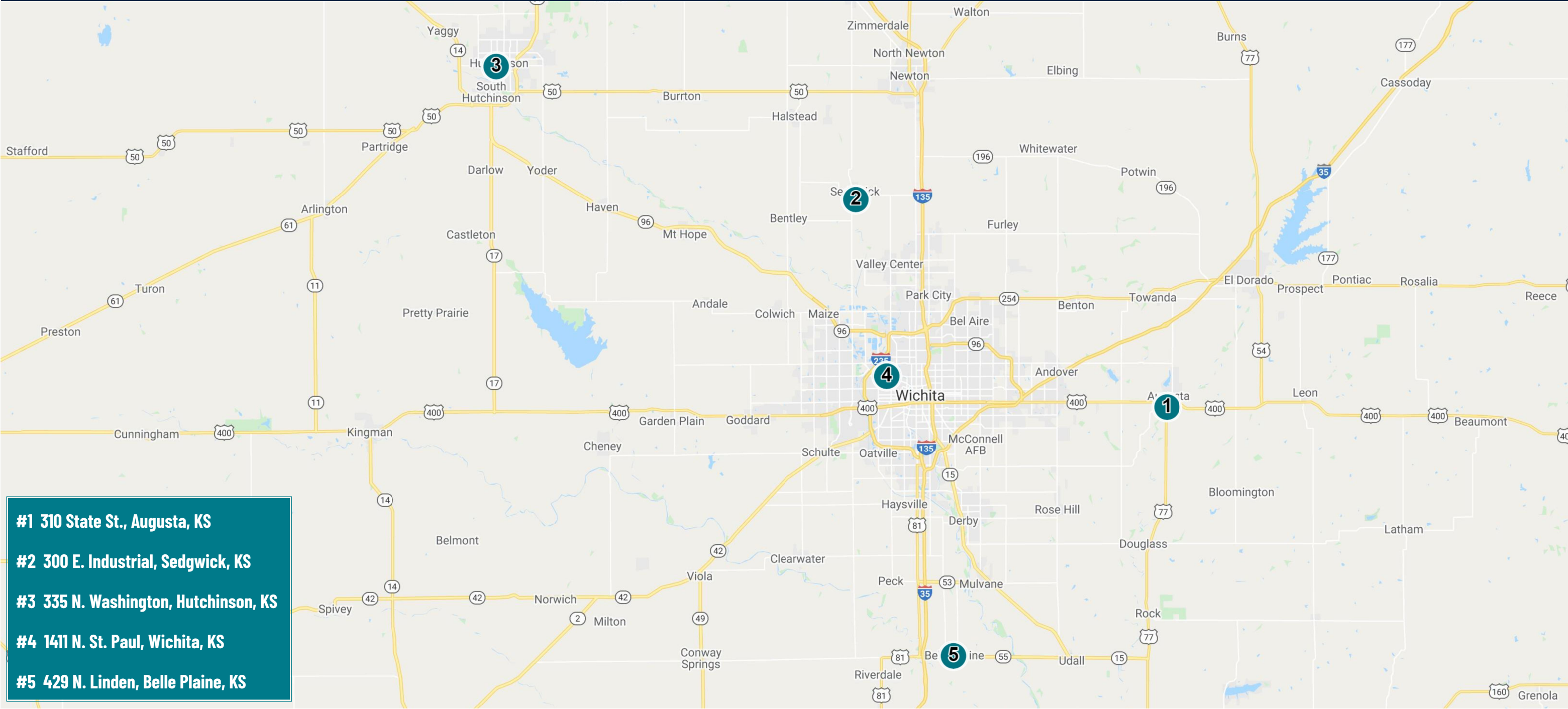
WEIGAND MULTI-PROPERTY ONLINE AUCTION



ONLINE ONLY

Register & Bid online at WeigandAuctions.com

AUGUSTA — SEDGWICK — HUTCHINSON — WICHITA — BELLE PLAINE



J.P. Weigand & Sons, Inc. - Auction Division
150 N. Market Wichita, KS 67202 | WeigandAuctions.com



Kevin Howell, Auctioneer | 316-292-3971 | khowell@weigand.com

AUCTION PROCEDURE: All properties will be a Reserve Auction and are subject to Seller acceptance of bid. Online bidding is by approval only. Bidders must provide a proof of funds letter from a bank to participate in online bidding. **BUYER'S PREMIUM:** A buyer's premium of 10% of the final bid will be added to the final bid price to determine the total purchase price. **AUCTION TERMS:** The successful bidder shall be required to make a deposit in the amount equal to 10% of the total purchase price as earnest money in the form of Certified or Personal Check with proper identification within 24 hours of close of auction. Closing will take place on or before 30 days following the day of auction. **IMPORTANT NOTICE TO ALL BIDDERS:** All the information contained in this brochure was obtained from sources believed to be correct but is not guaranteed. This property will be sold "as is, where is" and bidders shall rely on their own information, judgment, and inspection of the property and records. This property will be sold subject to any application Federal, State, and/or Local Government Regulations. **BROKER PARTICIPATION:** At the completion of a successful closing, a fee of 3% of the buyer's premium will be paid by J.P. Weigand & Sons, Inc. to the broker properly registering and representing the successful bidder. Please visit www.WeigandAuctions.com for a detailed explanation of Terms and Conditions.