

WEIGAND

AUCTION

LANDMARK WICHITA PROPERTY FOR SALE AT ABSOLUTE AUCTION

Margarita's Cantina – 3109 E. Douglas & 3111 E. Douglas, Wichita, KS 67211 | Sedgwick County

ONLINE ONLY

Register & Bid Online at [WeigandAuctions.com](https://www.WeigandAuctions.com)

Bidding Ends Tuesday, October 21, 2025 @ 2:00 PM, CT



REAL ESTATE ONLY. BUSINESS NOT INCLUDED.



Weigand Auction is proud to present this well-known Wichita property for auction. For more than 30 years, the building has been home to Margarita's Cantina, a popular restaurant and gathering place along East Douglas near historic College Hill.

The auction is for the real estate only. The sale does not include the existing business or restaurant name.

This property offers excellent visibility and convenient access to Kellogg/US 54 Hwy., Wesley Medical Center, and downtown Wichita. Ample on-site parking supports the high-capacity layout, which features seating for more than 130 customers on the main level, an upstairs dining and bar area, plus an outdoor patio. A designated stage area provides additional flexibility for live entertainment, special events, or expanded dining use.

With prime frontage along East Douglas and a flexible interior space, this property is ideally positioned to serve the Wichita community for years to come. Don't miss the chance to own a recognizable piece of Wichita real estate.

FOR MORE DETAILS, VISIT
[WEIGANDAUCTIONS.COM](https://www.WeigandAuctions.com)
OR **SCAN** THE QR CODE.



Weigand Real Estate – Auction
150 N. Market Wichita, KS 67202 | [WeigandAuctions.com](https://www.WeigandAuctions.com)



Kevin Howell, Auctioneer
316-292-3971 | khowell@weigand.com

Grant Tidemann, SIOR
316-292-3908 | tidemann@weigand.com

AUCTION PROCEDURES: Absolute auction with online bidding by approval only. Bidding will remain open until three (3) minutes have passed without receiving another bid. Brokerage reserves the right to request a proof of funds letter from a bank to participate in online bidding. **BUYER'S PREMIUMS:** A buyer's premium of ten percent (10%) of the final bid will be added to the final bid price to determine the total purchase price. **AUCTION TERMS:** The successful bidder shall be required to make a deposit in an amount equal to ten percent (10%) of the total purchase price as earnest money in the form of Certified or Personal Check with proper identification within twenty-four (24) hours of close of auction. Closing will take place on or before thirty (30) days following the day of auction. Possession is subject to tenant rights. **IMPORTANT NOTICE TO ALL BIDDERS:** All the information contained in this brochure was obtained from sources believed to be correct but is not guaranteed. This property will be sold "as is, where is" and bidders shall only rely on their own information, judgment, and inspection of the property and records. Any personal property currently on the premises is excluded from the sale. The NIL of Margarita's is property of the current tenant and is not being offered as a part of the transaction. This property will be sold subject to any applicable Federal, State, and/or Local Government Regulations. **BROKER PARTICIPATION:** At the completion of a successful closing, a fee of three percent (3%) of the final bid price will be paid by J.P. Weigand & Sons, Inc. to the broker properly registering and representing the successful bidder. Please visit [WeigandAuctions.com](https://www.WeigandAuctions.com) for a detailed explanation of Terms and Conditions.

WEIGAND

AUCTION

LANDMARK WICHITA PROPERTY FOR SALE AT ABSOLUTE AUCTION

Margarita's Cantina – 3109 E. Douglas & 3111 E. Douglas, Wichita, KS 67211 | Sedgwick County

ONLINE ONLY

Register & Bid Online at [WeigandAuctions.com](https://www.WeigandAuctions.com)

Bidding Ends Tuesday, October 21, 2025 @ 2:00 PM, CT



REAL ESTATE ONLY. BUSINESS NOT INCLUDED.

BUILDING SIZE
4,425± SF

YEAR BUILT
1945

PARKING
Approx. 80

SITE SIZE
37,606± SF

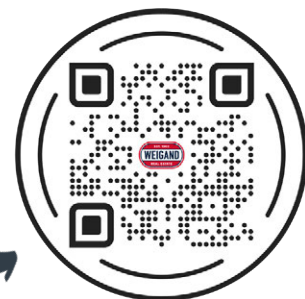
ZONING General Commercial
& General Office

2024 TAXES
Generals: \$15,816.94
Specials: \$187.50 (Waste Fee)

PROPERTY HIGHLIGHTS

- Prime East Douglas frontage.
- Real estate only auction.
- High-capacity dining and event space.
- Ample on-site parking.

SCAN TO REGISTER
& BID ONLINE



Property outlines are estimated.

WICHITA, KANSAS AT A GLANCE

TRAFFIC COUNTS

26,756 VPD at Douglas & Hillside



111,852
Population
(3 Miles)



\$71,341
Avg. HH Income
(3 Miles)



33.1
Median Age
(3 Miles)



50,342
Total Businesses
(3 Miles)

ABSOLUTE



Weigand Real Estate – Auction
150 N. Market Wichita, KS 67202 | [WeigandAuctions.com](https://www.WeigandAuctions.com)



Kevin Howell, Auctioneer
316-292-3971 | khowell@weigand.com

Grant Tidemann, SIOR
316-292-3908 | tidemann@weigand.com

AUCTION PROCEDURES: Absolute auction with online bidding by approval only. Bidding will remain open until three (3) minutes have passed without receiving another bid. Brokerage reserves the right to request a proof of funds letter from a bank to participate in online bidding. **BUYER'S PREMIUMS:** A buyer's premium of ten percent (10%) of the final bid will be added to the final bid price to determine the total purchase price. **AUCTION TERMS:** The successful bidder shall be required to make a deposit in an amount equal to ten percent (10%) of the total purchase price as earnest money in the form of Certified or Personal Check with proper identification within twenty-four (24) hours of close of auction. Closing will take place on or before thirty (30) days following the day of auction. Possession is subject to tenant rights. **IMPORTANT NOTICE TO ALL BIDDERS:** All the information contained in this brochure was obtained from sources believed to be correct but is not guaranteed. This property will be sold "as is, where is" and bidders shall only rely on their own information, judgment, and inspection of the property and records. Any personal property currently on the premises is excluded from the sale. The NIL of Margarita's is property of the current tenant and is not being offered as a part of the transaction. This property will be sold subject to any applicable Federal, State, and/or Local Government Regulations. **BROKER PARTICIPATION:** At the completion of a successful closing, a fee of three percent (3%) of the final bid price will be paid by J.P. Weigand & Sons, Inc. to the broker properly registering and representing the successful bidder. Please visit [WeigandAuctions.com](https://www.WeigandAuctions.com) for a detailed explanation of Terms and Conditions.

WEIGAND

AUCTION

LANDMARK WICHITA PROPERTY FOR SALE AT ABSOLUTE AUCTION

Margarita's Cantina – 3109 E. Douglas & 3111 E. Douglas, Wichita, KS 67211 | Sedgwick County

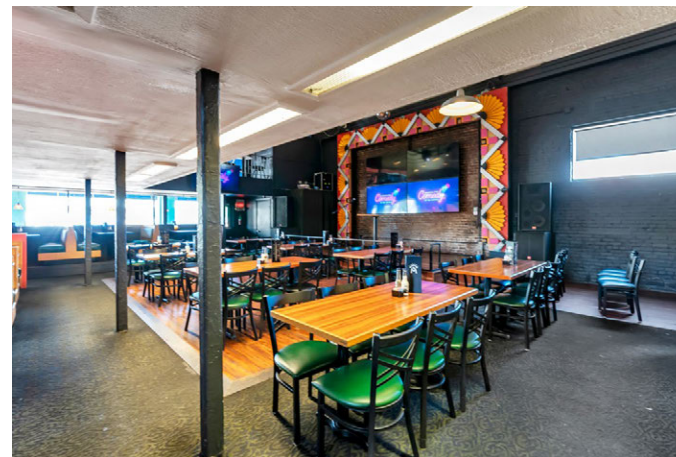
ONLINE ONLY

Register & Bid Online at [WeigandAuctions.com](https://www.WeigandAuctions.com)

Bidding Ends Tuesday, October 21, 2025 @ 2:00 PM, CT



Entrance



First Floor Seating Facing Stage



First Floor Seating



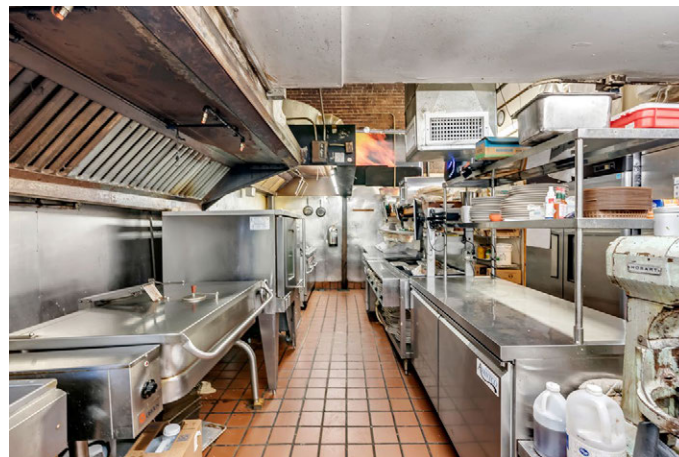
Seating Near Bar



Seating Near Bar



First Floor Bar



Kitchen



Kitchen



Restroom



Weigand Real Estate – Auction
150 N. Market Wichita, KS 67202 | [WeigandAuctions.com](https://www.WeigandAuctions.com)



Kevin Howell, Auctioneer
316-292-3971 | khowell@weigand.com

Grant Tidemann, SIOR
316-292-3908 | tidemann@weigand.com

AUCTION PROCEDURES: Absolute auction with online bidding by approval only. Bidding will remain open until three (3) minutes have passed without receiving another bid. Brokerage reserves the right to request a proof of funds letter from a bank to participate in online bidding. **BUYER'S PREMIUMS:** A buyer's premium of ten percent (10%) of the final bid will be added to the final bid price to determine the total purchase price. **AUCTION TERMS:** The successful bidder shall be required to make a deposit in an amount equal to ten percent (10%) of the total purchase price as earnest money in the form of Certified or Personal Check with proper identification within twenty-four (24) hours of close of auction. Closing will take place on or before thirty (30) days following the day of auction. Possession is subject to tenant rights. **IMPORTANT NOTICE TO ALL BIDDERS:** All the information contained in this brochure was obtained from sources believed to be correct but is not guaranteed. This property will be sold "as is, where is" and bidders shall only rely on their own information, judgment, and inspection of the property and records. Any personal property currently on the premises is excluded from the sale. The NIL of Margarita's is property of the current tenant and is not being offered as a part of the transaction. This property will be sold subject to any applicable Federal, State, and/or Local Government Regulations. **BROKER PARTICIPATION:** At the completion of a successful closing, a fee of three percent (3%) of the final bid price will be paid by J.P. Weigand & Sons, Inc. to the broker properly registering and representing the successful bidder. Please visit [WeigandAuctions.com](https://www.WeigandAuctions.com) for a detailed explanation of Terms and Conditions.

WEIGAND

AUCTION

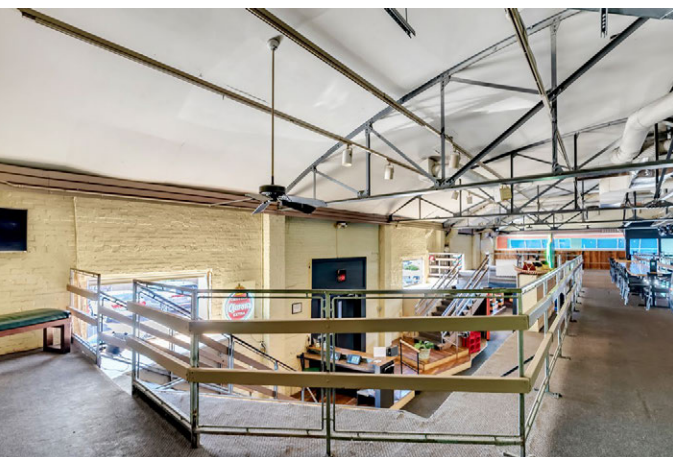
LANDMARK WICHITA PROPERTY FOR SALE AT ABSOLUTE AUCTION

Margarita's Cantina – 3109 E. Douglas & 3111 E. Douglas, Wichita, KS 67211 | Sedgwick County

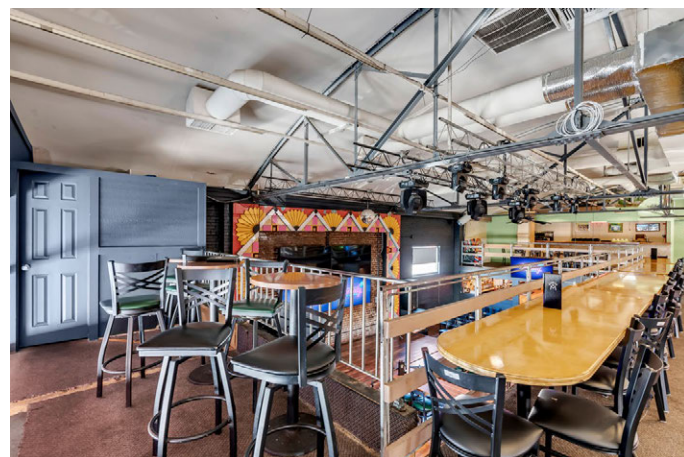
ONLINE ONLY

Register & Bid Online at [WeigandAuctions.com](https://www.WeigandAuctions.com)

Bidding Ends Tuesday, October 21, 2025 @ 2:00 PM, CT



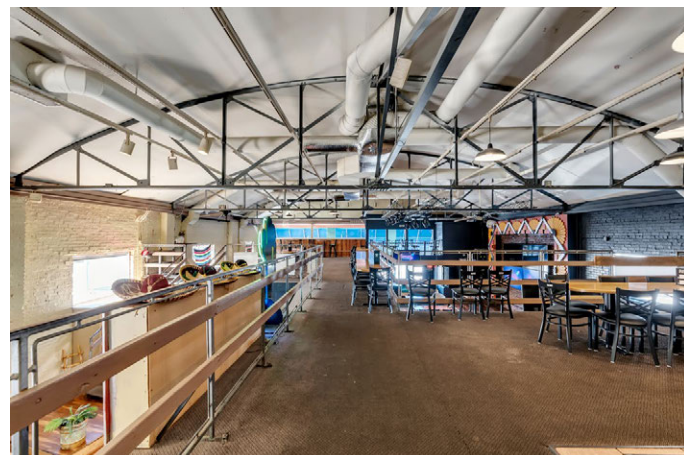
View of Upstairs



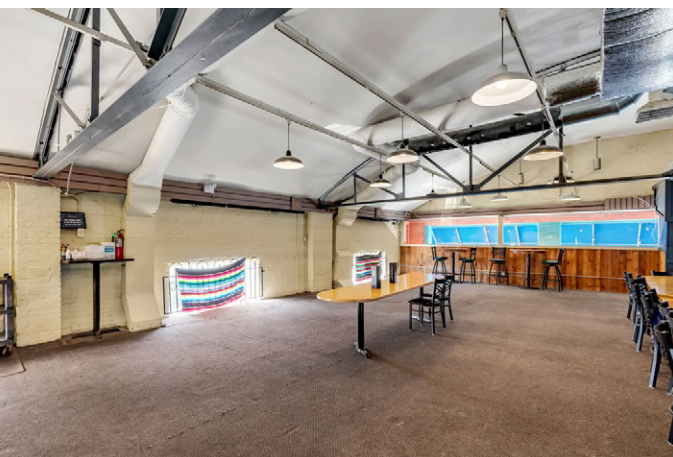
Upstairs Seating Area Facing Stage



Upstairs Bar



Upstairs Seating Area



View of Upstairs



View of Upstairs



Weigand Real Estate – Auction
150 N. Market Wichita, KS 67202 | [WeigandAuctions.com](https://www.WeigandAuctions.com)



Kevin Howell, Auctioneer
316-292-3971 | khowell@weigand.com

Grant Tidemann, SIOR
316-292-3908 | tidemann@weigand.com

AUCTION PROCEDURES: Absolute auction with online bidding by approval only. Bidding will remain open until three (3) minutes have passed without receiving another bid. Brokerage reserves the right to request a proof of funds letter from a bank to participate in online bidding. **BUYER'S PREMIUMS:** A buyer's premium of ten percent (10%) of the final bid will be added to the final bid price to determine the total purchase price. **AUCTION TERMS:** The successful bidder shall be required to make a deposit in an amount equal to ten percent (10%) of the total purchase price as earnest money in the form of Certified or Personal Check with proper identification within twenty-four (24) hours of close of auction. Closing will take place on or before thirty (30) days following the day of auction. Possession is subject to tenant rights. **IMPORTANT NOTICE TO ALL BIDDERS:** All the information contained in this brochure was obtained from sources believed to be correct but is not guaranteed. This property will be sold "as is, where is" and bidders shall only rely on their own information, judgment, and inspection of the property and records. Any personal property currently on the premises is excluded from the sale. The NIL of Margaritas is property of the current tenant and is not being offered as a part of the transaction. This property will be sold subject to any applicable Federal, State, and/or Local Government Regulations. **BROKER PARTICIPATION:** At the completion of a successful closing, a fee of three percent (3%) of the final bid price will be paid by J.P. Weigand & Sons, Inc. to the broker properly registering and representing the successful bidder. Please visit [WeigandAuctions.com](https://www.WeigandAuctions.com) for a detailed explanation of Terms and Conditions.