

# SEALED BID OFFERING

2225 East Central, Wichita, KS



AUCTION DIVISION

**Bids Due November 11, 2020 at 12:00 p.m. CST**

Register on our website at  
[WeigandAuctions.com](http://WeigandAuctions.com) for more info



## SITE SIZE

53,796 SF

## BUILDING SIZE

34,552 SF

## ZONING

LIMITED COMMERCIAL & MULTI-FAMILY

## YEARS BUILT

1948/1954/1961

## TRAFFIC COUNTS

26,195 VPD AT CENTRAL & GROVE

## 2019 TAXES

GENERALS: \$0.00 | SPECIALS: \$40.26

## PROPERTY HIGHLIGHTS

- 33,245 SF (.76 Acres) Parking Lot.
- Easy access to I-135.
- Former Calvary Hill Assembly of God.
- Redevelopment Opportunity.

## DEMOGRAPHICS



POPULATION

1 MILE

3 MILES

5 MILES

10,990

105,471

230,148



AVG. HH INCOME

\$44,173

\$50,467

\$56,901



MEDIAN AGE

31.3

33.1

34.4

J.P. Weigand & Sons, Inc. is pleased to announce it is accepting sealed bid offers on a vacant church located at 2225 East Central in Wichita, Kansas

If you are interested in this property and would like more information, please register on our website at [WeigandAuctions.com](http://WeigandAuctions.com).



AUCTION DIVISION

**Kevin Howell, Auctioneer**

316-292-3971 | [khowell@weigand.com](mailto:khowell@weigand.com)

**Randy Johnston**

316-292-3913 | [rjohnston@weigand.com](mailto:rjohnston@weigand.com)

# SEALED BID OFFERING

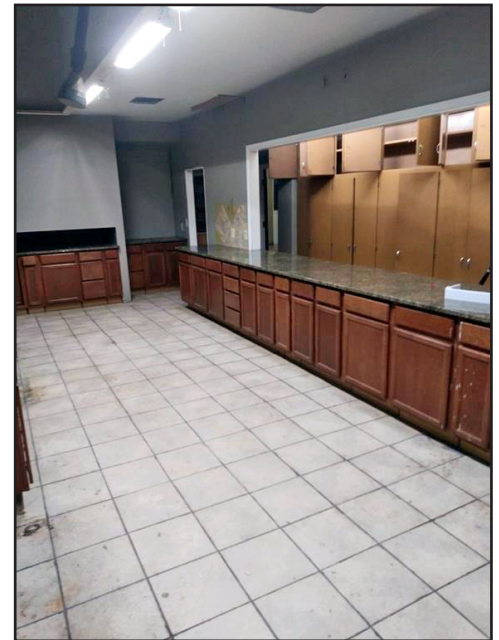
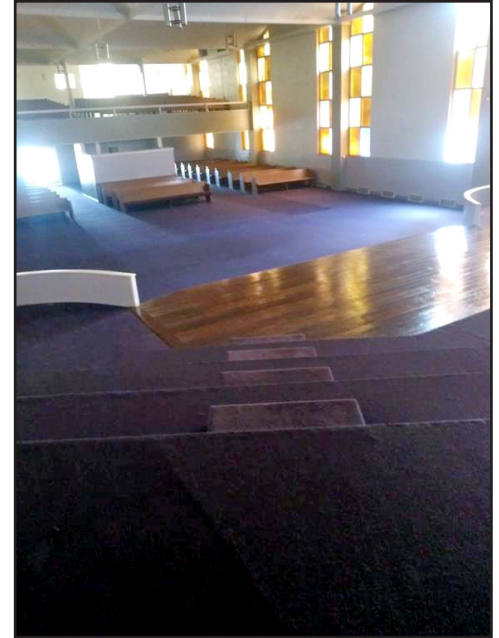
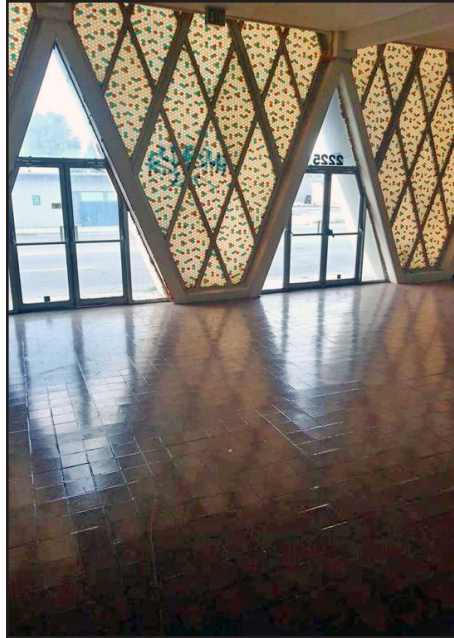
2225 East Central, Wichita, KS



AUCTION DIVISION

**Bids Due November 11, 2020 at 12:00 p.m. CST**

Register on our website at  
[WeigandAuctions.com](http://WeigandAuctions.com) for more info



AUCTION DIVISION

**Kevin Howell, Auctioneer**

316-292-3971 | [khowell@weigand.com](mailto:khowell@weigand.com)

**Randy Johnston**

316-292-3913 | [rjohnston@weigand.com](mailto:rjohnston@weigand.com)



# SEALED BID OFFERING

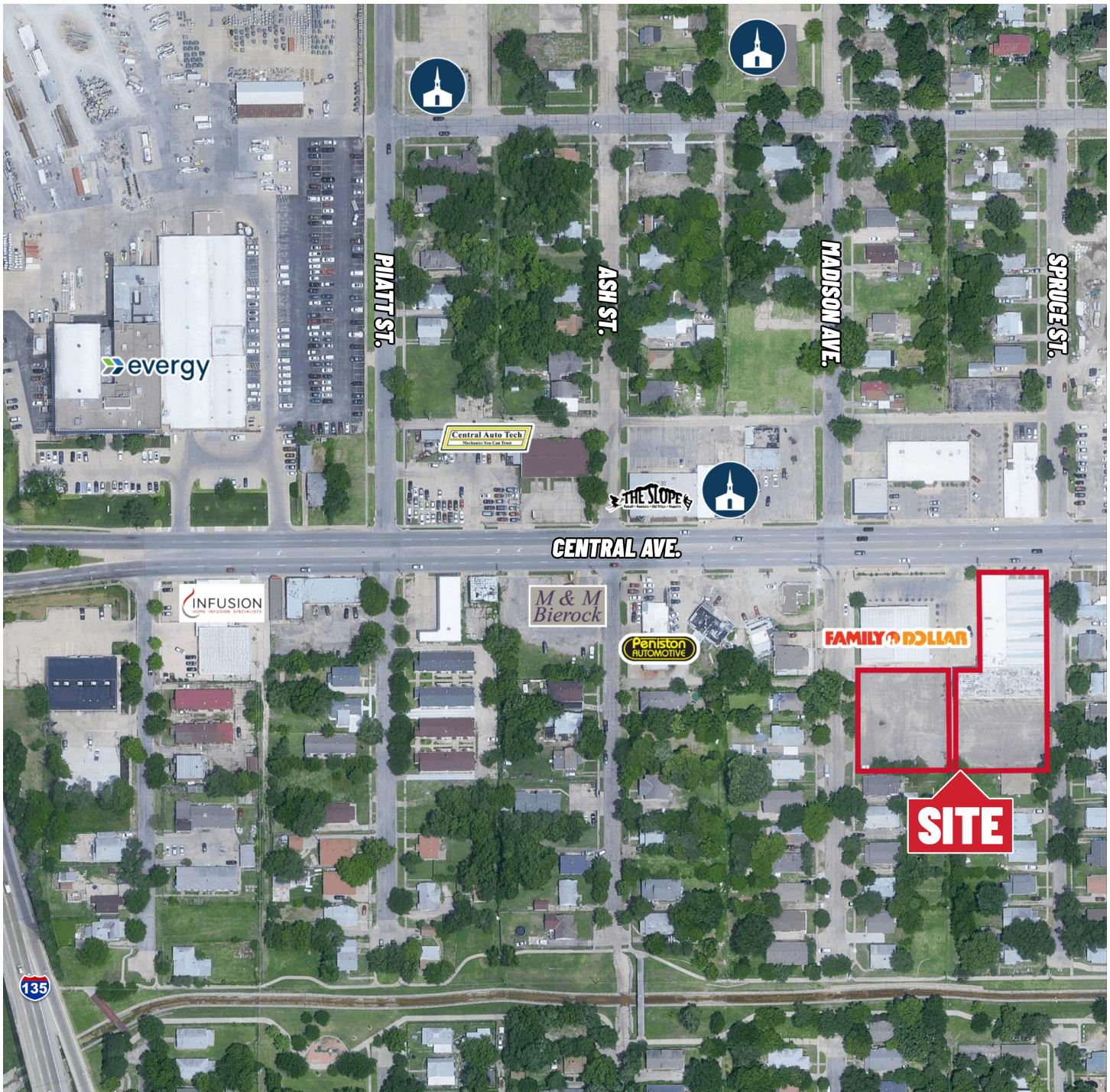
2225 East Central, Wichita, KS



AUCTION DIVISION

**Bids Due November 11, 2020 at 12:00 p.m. CST**

Register on our website at  
[WeigandAuctions.com](http://WeigandAuctions.com) for more info



IMPORTANT NOTICE TO ALL BIDDERS: All the information contained in this brochure was obtained from sources believed to be correct but is not guaranteed. This property will be sold "as is, where is" and bidders shall rely on their own information, judgment, and inspection of the property and records. This property will be sold subject to any application Federal, State, and/or Local Government Regulations. AUCTION TERMS: The successful bidder will be required to make a deposit in the amount equal to 10% of the total purchase price as earnest money in the form of Certified or Personal Check with proper identification on auction day. Closing will take place on or before 30 days following the day of auction. BROKER PARTICIPATION: At the completion of a successful closing, a fee of 3% will be paid by J.P. Weigand & Sons, Inc. to the broker properly registering and representing the successful bidder. Please visit [www.WeigandAuctions.com](http://www.WeigandAuctions.com) for a detailed explanation of Terms and Conditions.



AUCTION DIVISION

**Kevin Howell, Auctioneer**

316-292-3971 | [khowell@weigand.com](mailto:khowell@weigand.com)

**Randy Johnston**

316-292-3913 | [rjohnston@weigand.com](mailto:rjohnston@weigand.com)