

ARLINGTON, KS - MULTI-PARCEL AUCTION

ONLINE ONLY Register & Bid online at [WeigandAuctions.com](https://www.WeigandAuctions.com) Bidding Ends THURS., DECEMBER 13, 2022 starting at 10 AM CT

#1



ABSOLUTE

000000 W. CASTLETON RD.

Site Size: 294± ACRES

#2



ABSOLUTE

0000 S. STERLING RD.

Site Size: 161± ACRES

#3



ABSOLUTE

18010 S. STERLING RD.

Site Size: 161± ACRES

#4



ABSOLUTE

000000 S. PEACE RD.

Site Size: 154± ACRES

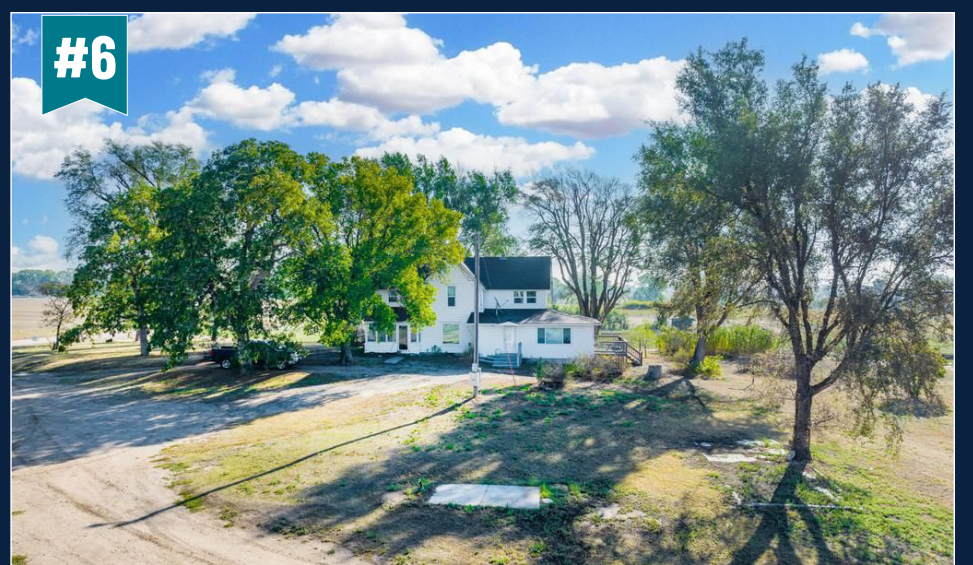
#5



21107 W. CASTLETON RD.

Site Size: HOME on 4.67± ACRES

#6



21417 W. CASTLETON RD.

Site Size: HOME on 7.25± ACRES



J.P. Weigand & Sons, Inc. - Auction Division
150 N. Market Wichita, KS 67202
[WeigandAuctions.com](https://www.WeigandAuctions.com)



Kevin Howell, Auctioneer
316-292-3971 | khowell@weigand.com

Rick Hopper, Auctioneer
620-229-3590 | rhopper@weigand.com

Ken Patterson, Auctioneer
620-218-1713 | kpatterson@weigand.com

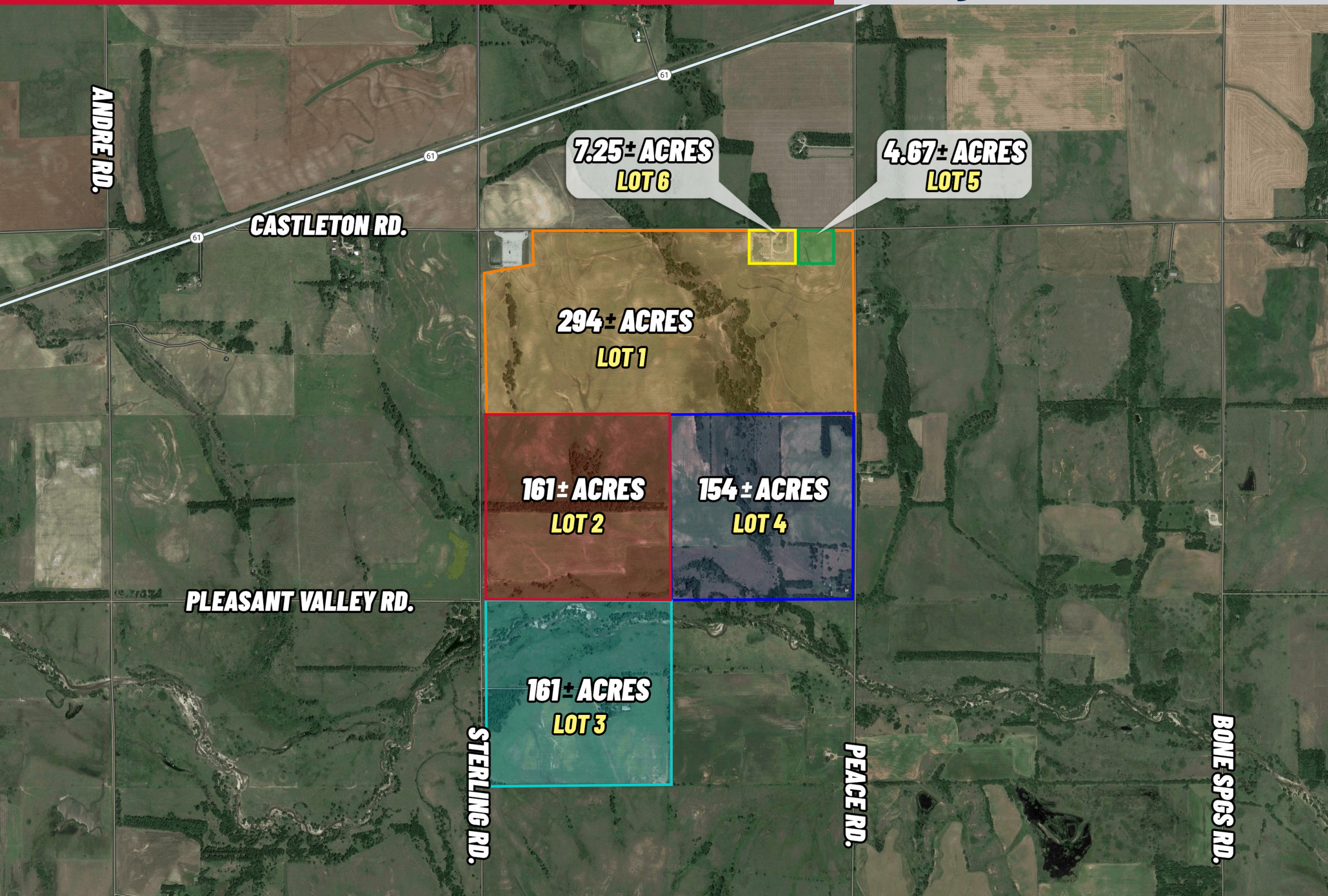
Lots 1, 2, 3, and 4 will be sold absolute. Lots 5 and 6 are subject to Seller's confirmation. Online bidding is by approval only. Bidders must provide a proof of funds letter from a bank to participate in online bidding. BUYER'S PREMIUM: A buyer's premium of 10% of the final bid will be added to the final bid price to determine the total purchase price. AUCTION TERMS: The successful bidder shall be required to make a deposit in the amount equal to 10% of the total purchase price as earnest money in the form of Certified or Personal Check with proper identification at close of auction. Closing will take place on or before 30 days following the day of auction. IMPORTANT NOTICE TO ALL BIDDERS: All the information was obtained from sources believed to be correct but is not guaranteed. This property will be sold "as is, where is" and bidders shall rely on their own information, judgment, and inspection of the property and records. This property will be sold subject to any application Federal, State, and/or Local Government Regulations. BROKER PARTICIPATION: At the completion of a successful closing, a fee of 2% of the buyer's premium will be paid by J.P. Weigand & Sons, Inc. to the broker properly registering and representing the successful bidder. Please visit www.WeigandAuctions.com for a detailed explanation of Terms and Conditions.

WEIGAND ONLINE-ONLY AUCTION

ARLINGTON MULTI-PARCEL AUCTION

ONLINE ONLY Register & Bid online at [WeigandAuctions.com](https://www.WeigandAuctions.com)

Bidding Ends THURS., DECEMBER 13, 2022 starting at 10 AM CT



Don't miss the unique opportunity to bid on over 800 continuous acres of highly desirable Kansas recreational and productive agricultural land featuring multiple houses and outbuildings. Offered in six tracts, this auction truly has something for everyone! World class Kansas hunting and a perfect blend of pasture, timber, and productive farm ground make this a true oasis just minutes from Wichita and Hutchinson make this an opportunity you won't want to miss! Invest in land you can enjoy today!

LOT #1: ABSOLUTE - 294± ACRES - Bidding Ends at 10 AM CT

LOT #2: ABSOLUTE - 161± ACRES Bidding Ends at 11 AM CT

LOT #3: ABSOLUTE - 161± ACRES Bidding Ends at 12 PM CT

LOT #4: ABSOLUTE - 154± ACRES Bidding Ends at 1 PM CT

LOT #5: HOME on 4.67± ACRES Bidding Ends at 2 PM CT

LOT #6: HOME on 7.25± ACRES Bidding Ends at 3 PM CT



**REGISTER
ONLINE**



J.P. Weigand & Sons, Inc. - Auction Division
150 N. Market Wichita, KS 67202
[WeigandAuctions.com](https://www.WeigandAuctions.com)



Kevin Howell, Auctioneer
316-292-3971 | khowell@weigand.com

Rick Hopper, Auctioneer
620-229-3590 | rhopper@weigand.com

Ken Patterson, Auctioneer
620-218-1713 | kpatterson@weigand.com

Lots 1, 2, 3, and 4 will be sold absolute. Lots 5 and 6 are subject to Seller's confirmation. Online bidding is by approval only. Bidders must provide a proof of funds letter from a bank to participate in online bidding. BUYER'S PREMIUM: A buyer's premium of 10% of the final bid will be added to the final bid price to determine the total purchase price. AUCTION TERMS: The successful bidder shall be required to make a deposit in the amount equal to 10% of the total purchase price as earnest money in the form of Certified or Personal Check with proper identification at close of auction. Closing will take place on or before 30 days following the day of auction. IMPORTANT NOTICE TO ALL BIDDERS: All the information was obtained from sources believed to be correct but is not guaranteed. This property will be sold "as is, where is" and bidders shall rely on their own information, judgment, and inspection of the property and records. This property will be sold subject to any application Federal, State, and/or Local Government Regulations. BROKER PARTICIPATION: At the completion of a successful closing, a fee of 2% of the buyer's premium will be paid by J.P. Weigand & Sons, Inc. to the broker properly registering and representing the successful bidder. Please visit www.WeigandAuctions.com for a detailed explanation of Terms and Conditions.

LOT 1 - 294± ACRES - ABSOLUTE

000000 W. CASTLETON RD.

ONLINE ONLY Register & Bid online at [WeigandAuctions.com](https://www.WeigandAuctions.com)

Bidding Ends THURS., DECEMBER 13, 2022 starting at 10 AM CT



SITE SIZE

294± ACRES

2022 TAXES

GENERALS: \$2,100.00

*taxes are approximate,
exact legal to be determined
by survey

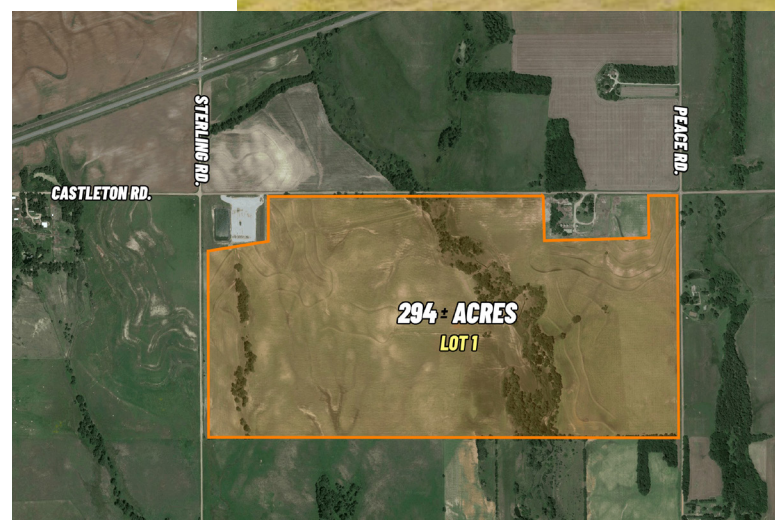
PROPERTY HIGHLIGHTS

294 ± acres of pasture. This sprawling tract offers rolling pasture with a blend of timber, creeks, and open meadows creating a beautiful wildlife habitat that's home to Kansas Whitetail, turkey, quail, and waterfowl! Selling online at absolute auction.

Wichita 57 Miles	Kingman 22 Miles
Pratt 36 Miles	Hutch 19 Miles



**REGISTER
ONLINE**



J.P. Weigand & Sons, Inc. - Auction Division
150 N. Market Wichita, KS 67202
[WeigandAuctions.com](https://www.WeigandAuctions.com)



Kevin Howell, Auctioneer
316-292-3971 | khowell@weigand.com

Rick Hopper, Auctioneer
620-229-3590 | rhopper@weigand.com

Ken Patterson, Auctioneer
620-218-1713 | kpatterson@weigand.com



Lots 1, 2, 3, and 4 will be sold absolute. Lots 5 and 6 are subject to Seller's confirmation. Online bidding is by approval only. Bidders must provide a proof of funds letter from a bank to participate in online bidding. BUYER'S PREMIUM: A buyer's premium of 10% of the final bid will be added to the final bid price to determine the total purchase price. AUCTION TERMS: The successful bidder shall be required to make a deposit in the amount equal to 10% of the total purchase price as earnest money in the form of Certified or Personal Check with proper identification at close of auction. Closing will take place on or before 30 days following the day of auction. IMPORTANT NOTICE TO ALL BIDDERS: All the information was obtained from sources believed to be correct but is not guaranteed. This property will be sold "as is, where is" and bidders shall rely on their own information, judgment, and inspection of the property and records. This property will be sold subject to any application Federal, State, and/or Local Government Regulations. BROKER PARTICIPATION: At the completion of a successful closing, a fee of 2% of the buyer's premium will be paid by J.P. Weigand & Sons, Inc. to the broker properly registering and representing the successful bidder. Please visit www.WeigandAuctions.com for a detailed explanation of Terms and Conditions.

LOT 2 - 161± ACRES - ABSOLUTE

000000 W. STERLING RD.

ONLINE ONLY Register & Bid online at [WeigandAuctions.com](https://www.WeigandAuctions.com)

Bidding Ends THURS., DECEMBER 13, 2022 starting at 11 AM CT



SITE SIZE

161± ACRES

2021 TAXES

GENERALS: \$1,055.05

*taxes are approximate,
exact legal to be determined
by survey.

PROPERTY HIGHLIGHTS

161+/- acres of CRP, pasture, and tillable farm ground. This quarter section offers 53 +/- acres of tillable farm ground with remaining balance of thick timber hedge rows, CRP and pasture. Home to Kansas Whitetail, turkey, quail, and more! Selling online at absolute auction.

Wichita 57 Miles	Kingman 22 Miles
Pratt 36 Miles	Hutch 19 Miles



**REGISTER
ONLINE**



J.P. Weigand & Sons, Inc. - Auction Division
150 N. Market Wichita, KS 67202
[WeigandAuctions.com](https://www.WeigandAuctions.com)



Kevin Howell, Auctioneer
316-292-3971 | khowell@weigand.com

Rick Hopper, Auctioneer
620-229-3590 | rhopper@weigand.com

Ken Patterson, Auctioneer
620-218-1713 | kpatterson@weigand.com



Lots 1, 2, 3, and 4 will be sold absolute. Lots 5 and 6 are subject to Seller's confirmation. Online bidding is by approval only. Bidders must provide a proof of funds letter from a bank to participate in online bidding. BUYER'S PREMIUM: A buyer's premium of 10% of the final bid will be added to the final bid price to determine the total purchase price. AUCTION TERMS: The successful bidder shall be required to make a deposit in the amount equal to 10% of the total purchase price as earnest money in the form of Certified or Personal Check with proper identification at close of auction. Closing will take place on or before 30 days following the day of auction. IMPORTANT NOTICE TO ALL BIDDERS: All the information was obtained from sources believed to be correct but is not guaranteed. This property will be sold "as is, where is" and bidders shall rely on their own information, judgment, and inspection of the property and records. This property will be sold subject to any application Federal, State, and/or Local Government Regulations. BROKER PARTICIPATION: At the completion of a successful closing, a fee of 2% of the buyer's premium will be paid by J.P. Weigand & Sons, Inc. to the broker properly registering and representing the successful bidder. Please visit www.WeigandAuctions.com for a detailed explanation of Terms and Conditions.

LOT 3 - 161± ACRES - ABSOLUTE

18010 W. STERLING RD.

ONLINE ONLY Register & Bid online at [WeigandAuctions.com](https://www.WeigandAuctions.com)

Bidding Ends THURS., DECEMBER 13, 2022 starting at 12 PM CT



SITE SIZE
161± ACRES

2021 TAXES
GENERALS: \$1424.24
*taxes are approximate,
exact legal to be determined
by survey.



**REGISTER
ONLINE**



PROPERTY HIGHLIGHTS

161+/- acres of pasture and tillable farm ground. This quarter section boasts an impressive blend of pasture, a larger active creek, tillable ground, a home site with several outbuildings, and heavy timber. Silver Creek runs the entire length of the property from east to west. The south end of the property features 79 +/- acres of income producing farm ground. Home to Kansas Whitetail, turkey, quail, and waterfowl! An old homesite offers the opportunity to renovate the existing structure for rental income, or a hunter's oasis. Several outbuildings give you plenty of room to store equipment or outdoor toys. The potential is endless. home to Kansas Whitetail, turkey, quail, and waterfowl! Selling online at absolute auction.



J.P. Weigand & Sons, Inc. - Auction Division
150 N. Market Wichita, KS 67202
[WeigandAuctions.com](https://www.WeigandAuctions.com)



Kevin Howell, Auctioneer
316-292-3971 | khowell@weigand.com

Rick Hopper, Auctioneer
620-229-3590 | rhopper@weigand.com

Ken Patterson, Auctioneer
620-218-1713 | kpatterson@weigand.com



Lots 1, 2, 3, and 4 will be sold absolute. Lots 5 and 6 are subject to Seller's confirmation. Online bidding is by approval only. Bidders must provide a proof of funds letter from a bank to participate in online bidding. BUYER'S PREMIUM: A buyer's premium of 10% of the final bid will be added to the final bid price to determine the total purchase price. AUCTION TERMS: The successful bidder shall be required to make a deposit in the amount equal to 10% of the total purchase price as earnest money in the form of Certified or Personal Check with proper identification at close of auction. Closing will take place on or before 30 days following the day of auction. IMPORTANT NOTICE TO ALL BIDDERS: All the information was obtained from sources believed to be correct but is not guaranteed. This property will be sold "as is, where is" and bidders shall rely on their own information, judgment, and inspection of the property and records. This property will be sold subject to any application Federal, State, and/or Local Government Regulations. BROKER PARTICIPATION: At the completion of a successful closing, a fee of 2% of the buyer's premium will be paid by J.P. Weigand & Sons, Inc. to the broker properly registering and representing the successful bidder. Please visit www.WeigandAuctions.com for a detailed explanation of Terms and Conditions.

LOT 4 - 154± ACRES - ABSOLUTE

000000 S. PEACE RD.

ONLINE ONLY Register & Bid online at [WeigandAuctions.com](https://www.WeigandAuctions.com)

Bidding Ends THURS., DECEMBER 13, 2022 starting at 1 PM CT



SITE SIZE

154± ACRES

2021 TAXES

GENERALS: \$708.38

*taxes are approximate,
exact legal to be determined
by survey.

PROPERTY HIGHLIGHTS

154+/- acres of pasture and tillable farm ground. This 154 tract offers a balance of 77 +/- acres of income producing crop land, heavy timber, and open areas creating a beautiful wildlife habitat that's home to Kansas Whitetail, turkey, quail, and the potential for income! Selling online at absolute auction.

Wichita 57 Miles	Kingman 22 Miles
Pratt 36 Miles	Hutch 19 Miles



**REGISTER
ONLINE**



J.P. Weigand & Sons, Inc. - Auction Division
150 N. Market Wichita, KS 67202
[WeigandAuctions.com](https://www.WeigandAuctions.com)



Kevin Howell, Auctioneer
316-292-3971 | khowell@weigand.com

Rick Hopper, Auctioneer
620-229-3590 | rhopper@weigand.com

Ken Patterson, Auctioneer
620-218-1713 | kpatterson@weigand.com

Lots 1, 2, 3, and 4 will be sold absolute. Lots 5 and 6 are subject to Seller's confirmation. Online bidding is by approval only. Bidders must provide a proof of funds letter from a bank to participate in online bidding. BUYER'S PREMIUM: A buyer's premium of 10% of the final bid will be added to the final bid price to determine the total purchase price. AUCTION TERMS: The successful bidder shall be required to make a deposit in the amount equal to 10% of the total purchase price as earnest money in the form of Certified or Personal Check with proper identification at close of auction. Closing will take place on or before 30 days following the day of auction. IMPORTANT NOTICE TO ALL BIDDERS: All the information was obtained from sources believed to be correct but is not guaranteed. This property will be sold "as is, where is" and bidders shall rely on their own information, judgment, and inspection of the property and records. This property will be sold subject to any application Federal, State, and/or Local Government Regulations. BROKER PARTICIPATION: At the completion of a successful closing, a fee of 2% of the buyer's premium will be paid by J.P. Weigand & Sons, Inc. to the broker properly registering and representing the successful bidder. Please visit www.WeigandAuctions.com for a detailed explanation of Terms and Conditions.

LOT 5 - HOME WITH 4.67± ACRES

21107 W. CASTLETON RD.

ONLINE ONLY Register & Bid online at [WeigandAuctions.com](https://www.WeigandAuctions.com)

Bidding Ends THURS., DECEMBER 13, 2022 starting at 2 PM CT



SITE SIZE
4.67± ACRES

2022 TAXES
GENERALS: \$2,205.92
*taxes are approximate,
exact legal to be determined
by survey.

PROPERTY HIGHLIGHTS

Built in 2021, this modern & custom Bardominium was strategically built on just under 5 acres in Arlington, Kansas. The outside offers fencing and turnouts for horses and beautiful 360-degree views. Inside the custom-build, you will find endless amenities, including stained concrete and high-end culinary appliances that are sure to impress! No expense was spared in building this country getaway.



**REGISTER
ONLINE**



Wichita 57 Miles	Kingman 22 Miles
Pratt 36 Miles	Hutch 19 Miles



J.P. Weigand & Sons, Inc. - Auction Division
150 N. Market Wichita, KS 67202
[WeigandAuctions.com](https://www.WeigandAuctions.com)



Kevin Howell, Auctioneer
316-292-3971 | khowell@weigand.com

Rick Hopper, Auctioneer
620-229-3590 | rhopper@weigand.com

Ken Patterson, Auctioneer
620-218-1713 | kpatterson@weigand.com

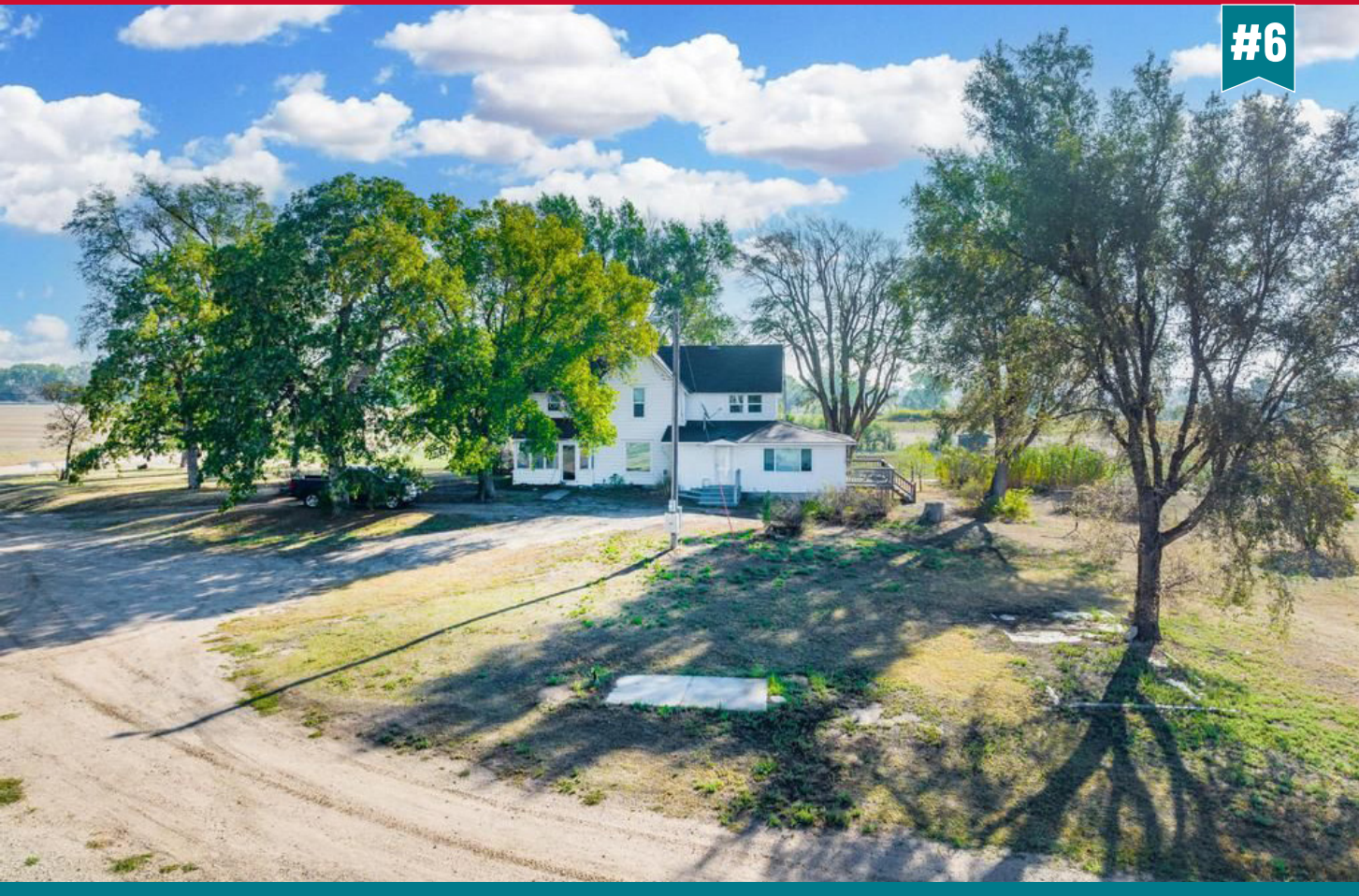
Lots 1, 2, 3, and 4 will be sold absolute. Lots 5 and 6 are subject to Seller's confirmation. Online bidding is by approval only. Bidders must provide a proof of funds letter from a bank to participate in online bidding. BUYER'S PREMIUM: A buyer's premium of 10% of the final bid will be added to the final bid price to determine the total purchase price. AUCTION TERMS: The successful bidder shall be required to make a deposit in the amount equal to 10% of the total purchase price as earnest money in the form of Certified or Personal Check with proper identification at close of auction. Closing will take place on or before 30 days following the day of auction. IMPORTANT NOTICE TO ALL BIDDERS: All the information was obtained from sources believed to be correct but is not guaranteed. This property will be sold "as is, where is" and bidders shall rely on their own information, judgment, and inspection of the property and records. This property will be sold subject to any application Federal, State, and/or Local Government Regulations. BROKER PARTICIPATION: At the completion of a successful closing, a fee of 2% of the buyer's premium will be paid by J.P. Weigand & Sons, Inc. to the broker properly registering and representing the successful bidder. Please visit www.WeigandAuctions.com for a detailed explanation of Terms and Conditions.

LOT 6 - HOME WITH 7.25± ACRES

21417 W. CASTLETON RD.

ONLINE ONLY Register & Bid online at [WeigandAuctions.com](https://www.WeigandAuctions.com)

Bidding Ends THURS., DECEMBER 13, 2022 starting at 3 PM CT



SITE SIZE
7.25± ACRES

2022 TAXES
GENERALS: \$4,357.36
*taxes are approximate,
exact legal to be determined
by survey.

PROPERTY HIGHLIGHTS

Beautifully Renovated Farmhouse on 7.25+/- Acres. This fully renovated farmhouse, originally built in 1905, features many high-quality upgrades. With 5 bedrooms & 2 full bathrooms there is enough room for a large family and/or gathering. Outside is a 100X50 utility building with a brand-new overhead door. Opener is ready to store equipment &/or your outdoor toys! Multiple grain bins are on site and there's plenty of room to expand or park equipment.



**REGISTER
ONLINE**



Wichita 57 Miles	Kingman 22 Miles
Pratt 36 Miles	Hutch 19 Miles



J.P. Weigand & Sons, Inc. - Auction Division
150 N. Market Wichita, KS 67202
[WeigandAuctions.com](https://www.WeigandAuctions.com)



Kevin Howell, Auctioneer
316-292-3971 | khowell@weigand.com

Rick Hopper, Auctioneer
620-229-3590 | rhopper@weigand.com

Ken Patterson, Auctioneer
620-218-1713 | kpatterson@weigand.com

Lots 1, 2, 3, and 4 will be sold absolute. Lots 5 and 6 are subject to Seller's confirmation. Online bidding is by approval only. Bidders must provide a proof of funds letter from a bank to participate in online bidding. BUYER'S PREMIUM: A buyer's premium of 10% of the final bid will be added to the final bid price to determine the total purchase price. AUCTION TERMS: The successful bidder shall be required to make a deposit in the amount equal to 10% of the total purchase price as earnest money in the form of Certified or Personal Check with proper identification at close of auction. Closing will take place on or before 30 days following the day of auction. IMPORTANT NOTICE TO ALL BIDDERS: All the information was obtained from sources believed to be correct but is not guaranteed. This property will be sold "as is, where is" and bidders shall rely on their own information, judgment, and inspection of the property and records. This property will be sold subject to any application Federal, State, and/or Local Government Regulations. BROKER PARTICIPATION: At the completion of a successful closing, a fee of 2% of the buyer's premium will be paid by J.P. Weigand & Sons, Inc. to the broker properly registering and representing the successful bidder. Please visit www.WeigandAuctions.com for a detailed explanation of Terms and Conditions.