

HALSTEAD KS MULTI-PARCEL AUCTION

ONLINE ONLY Register & Bid online at [WeigandAuctions.com](https://www.WeigandAuctions.com)

Bidding Ends THURS., DECEMBER 1, 2022 starting at 10 AM CT

#1



328 Poplar St.

Site Size: 7.72± Acres Building Size: 276,789± SF

MULTI-PARCEL AUCTION OFFERED SEPARATELY & TOGETHER

LOT #1 Bidding Ends at 10:00 AM CT

LOT #2 Bidding Ends at 11:00 AM CT

LOT #3 Bidding Ends at 12:00 PM CT

LOT #4 Bidding Ends at 1:00 PM CT

LOT #5 Bidding Ends at 2:00 PM CT

#2



308 Chestnut St.

Site Size: 48,750± SF Building Size: 36 units

#3



311 Chestnut St.

Property Size: 1,628 SF

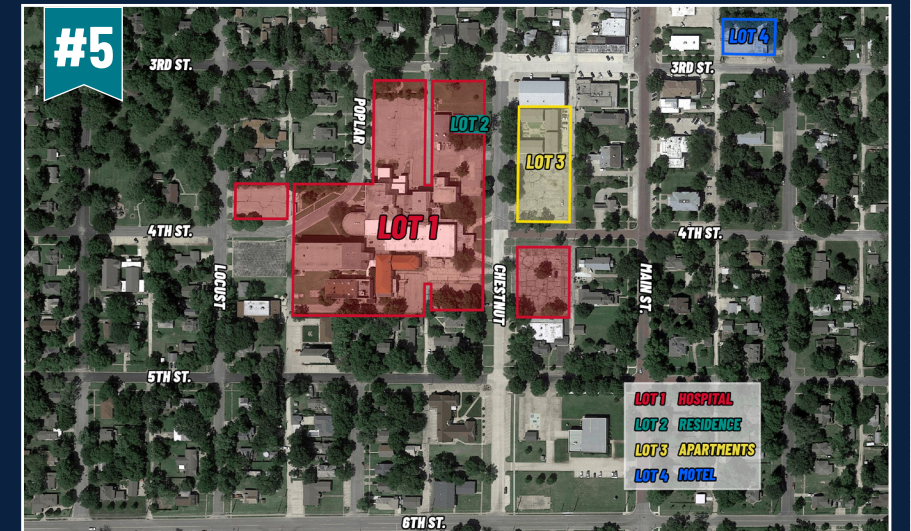
#4



126 E. 3rd St.

Site Size: 15,000± SF Building Size: 21 units

#5



4 LOTS TOGETHER
HALSTEAD, KS



J.P. Weigand & Sons, Inc. - Auction Division
150 N. Market Wichita, KS 67202
[WeigandAuctions.com](https://www.WeigandAuctions.com)



Kevin Howell, Auctioneer
316-292-3971 | khowell@weigand.com

Whitney Vliet Ward
316-292-3900 | wward@weigand.com

Ben Suellentrop
316-292-3911 | bsuellentrop@weigand.com

AUCTION PROCEDURE: Properties are being offered Separate & Together and subject to Seller's confirmation. Online bidding is by approval only. Bidding will remain open until 3 minutes have passed without receiving an acceptable bid. J.P. Weigand & Sons, Inc. - Auction Division reserves the right to request a proof of funds letter from a bank to participate in online bidding. BUYER'S PREMIUM: A buyer's premium of 10% of the final bid will be added to the final bid price to determine the total purchase price. AUCTION TERMS: The successful bidder shall be required to make a deposit in an amount equal to 10% of the total purchase price as earnest money in the form of Certified or Personal Check with proper identification within 24 hours of close of auction. Closing will take place on or before 30 days following the day of auction. IMPORTANT NOTICE TO ALL BIDDERS: All the information contained in this brochure was obtained from sources believed to be correct but is not guaranteed. This property will be sold "as is, where is" and bidders shall rely on their own information, judgment, and inspection of the property and records. This property will be sold subject to any applicable Federal, State, and/or Local Government Regulations. BROKER PARTICIPATION: At the completion of a successful closing, a fee of 3% of the buyer's premium will be paid by J.P. Weigand & Sons, Inc. to the broker properly registering and representing the successful bidder. Please visit [WeigandAuctions.com](https://www.WeigandAuctions.com) for a detailed explanation of Terms and Conditions.

LOT 1 - HALSTEAD HOSPITAL

328 POPLAR ST.
HALSTEAD, KS

ONLINE ONLY Register & Bid online at [WeigandAuctions.com](https://www.WeigandAuctions.com)

Bidding Ends THURS., DECEMBER 1, 2022 starting at 10 AM CT



HALSTEAD HOSPITAL HISTORY

The hospital was constructed in 1902, additional improvements and expansion in 1973, 1978 and 2007/8. Halstead Hospital was established by Dr. Arthur Hertzler in 1902. In 1923, the Hertzler Hospital & Clinic closed and the hospital was sold to the Sisters of St. Joseph of Wichita. Dr. Hertzler remained owner of the clinic until approximately 1946.

SITE SIZE
7.72± ACRES

BUILDING SIZE
276,789± SF

PARKING
APPROX. 522 SPACES




2021 TAXES
GENERALS: \$29,452.14

YEAR BUILD
1973
Renovations in '07/'08

PROPERTY HIGHLIGHTS

- 4 floors, 38 rooms on each floor
- Property can be adapted to:
 - Senior Care
 - Assisted Living
 - Respite Care
 - School Facility
- Plentiful classrooms, offices spaces, auditorium & training facilities

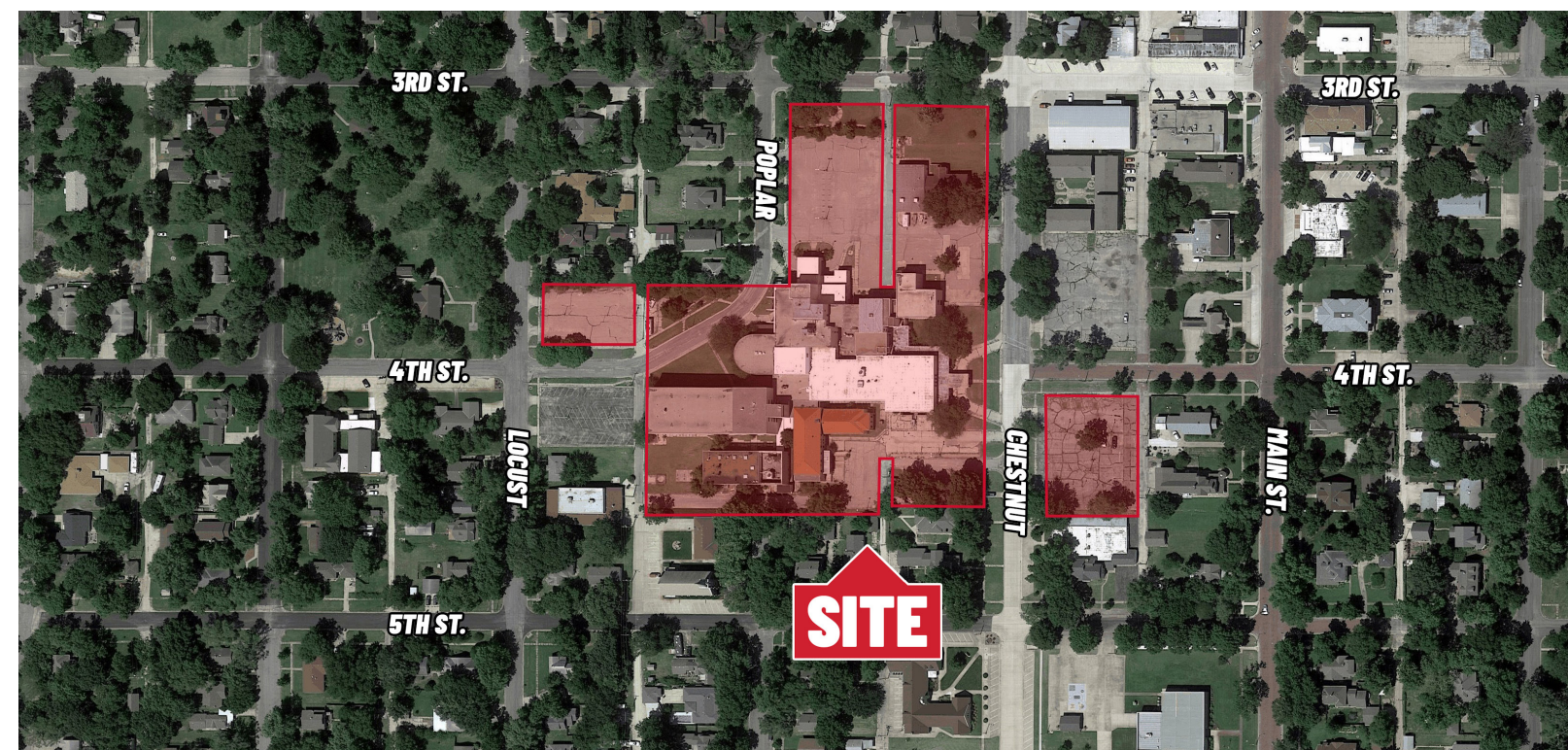
HARVEY COUNTY DEMOGRAPHICS

	POPULATION	33,817
	AVG. HH INCOME	\$58,782
	MEDIAN AGE	39.2 years old

Wichita
35 Miles

Topeka
140 Miles

Kansas City
200 Miles



J.P. Weigand & Sons, Inc. - Auction Division
150 N. Market Wichita, KS 67202
[WeigandAuctions.com](https://www.WeigandAuctions.com)



Kevin Howell, Auctioneer
316-292-3971 | khowell@weigand.com

Whitney Vliet Ward
316-292-3900 | wward@weigand.com

Ben Suellentrop
316-292-3911 | bsuellentrop@weigand.com



AUCTION PROCEDURE: Properties are being offered Separate & Together and subject to Seller's confirmation. Online bidding is by approval only. Bidding will remain open until 3 minutes have passed without receiving an acceptable bid. J.P. Weigand & Sons, Inc. - Auction Division reserves the right to request a proof of funds letter from a bank to participate in online bidding. BUYER'S PREMIUM: A buyer's premium of 10% of the final bid will be added to the final bid price to determine the total purchase price. AUCTION TERMS: The successful bidder shall be required to make a deposit in an amount equal to 10% of the total purchase price as earnest money in the form of Certified or Personal Check with proper identification within 24 hours of close of auction. Closing will take place on or before 30 days following the day of auction. IMPORTANT NOTICE TO ALL BIDDERS: All the information contained in this brochure was obtained from sources believed to be correct but is not guaranteed. This property will be sold "as is, where is" and bidders shall rely on their own information, judgment, and inspection of the property and records. This property will be sold subject to any applicable Federal, State, and/or Local Government Regulations. BROKER PARTICIPATION: At the completion of a successful closing, a fee of 3% of the buyer's premium will be paid by J.P. Weigand & Sons, Inc. to the broker properly registering and representing the successful bidder. Please visit [WeigandAuctions.com](https://www.WeigandAuctions.com) for a detailed explanation of Terms and Conditions.

LOT 2 - HALSTEAD APARTMENT COMPLEX

308 CHESTNUT ST.
HALSTEAD, KS

ONLINE ONLY Register & Bid online at [WeigandAuctions.com](https://www.WeigandAuctions.com)

Bidding Ends THURS., DECEMBER 1, 2022 starting at 11 AM CT



#2



SITE SIZE
48,750± SF

BUILDING SIZE
36 UNITS

2020 TAXES
GENERALS: \$3,206.62

TRAFFIC COUNTS
6th/Chestnut - 22,883 VPD

ZONING
B-3

PROPERTY HIGHLIGHTS

- Building across from Halstead Hospital
- Value add apartment complex
- Large parking lot

**register
online**



Wichita
35 Miles

Newton
12 Miles

Hutchinson
27 Miles

HARVEY COUNTY DEMOGRAPHICS



POPULATION 33,817



AVG. HH INCOME \$58,782



MEDIAN AGE 39.2 years old

J.P. Weigand & Sons, Inc. - Auction Division
150 N. Market Wichita, KS 67202
[WeigandAuctions.com](https://www.WeigandAuctions.com)



Kevin Howell, Auctioneer
316-292-3971 | khowell@weigand.com

Whitney Vliet Ward
316-292-3900 | wward@weigand.com

Ben Suellentrop
316-292-3911 | bsuellentrop@weigand.com



AUCTION PROCEDURE: Properties are being offered Separate & Together and subject to Seller's confirmation. Online bidding is by approval only. Bidding will remain open until 3 minutes have passed without receiving an acceptable bid. J.P. Weigand & Sons, Inc. - Auction Division reserves the right to request a proof of funds letter from a bank to participate in online bidding. BUYER'S PREMIUM: A buyer's premium of 10% of the final bid will be added to the final bid price to determine the total purchase price. AUCTION TERMS: The successful bidder shall be required to make a deposit in an amount equal to 10% of the total purchase price as earnest money in the form of Certified or Personal Check with proper identification within 24 hours of close of auction. Closing will take place on or before 30 days following the day of auction. IMPORTANT NOTICE TO ALL BIDDERS: All the information contained in this brochure was obtained from sources believed to be correct but is not guaranteed. This property will be sold "as is, where is" and bidders shall rely on their own information, judgment, and inspection of the property and records. This property will be sold subject to any applicable Federal, State, and/or Local Government Regulations. BROKER PARTICIPATION: At the completion of a successful closing, a fee of 3% of the buyer's premium will be paid by J.P. Weigand & Sons, Inc. to the broker properly registering and representing the successful bidder. Please visit [WeigandAuctions.com](https://www.WeigandAuctions.com) for a detailed explanation of Terms and Conditions.

LOT 3 - HALSTEAD RESIDENCE

311 CHESTNUT St.
HALSTEAD, KS

ONLINE ONLY Register & Bid online at [WeigandAuctions.com](https://www.WeigandAuctions.com)

Bidding Ends THURS., DECEMBER 1, 2022 starting at 12 PM CT



HOUSE SIZE
1,628 SF

YEAR BUILT
1980




LAYOUT
2-STORY

GARAGE
ATTACHED

PROPERTY HIGHLIGHTS

- Bi-Level
- 8 bedrooms, 4 Bathrooms (per county record)
- Full basement
- Former nun-housing
- Residence located near Main St.
- Structure attached to garage is not included.

HARVEY COUNTY DEMOGRAPHICS

	POPULATION	33,817
	AVG. HH INCOME	\$58,782
	MEDIAN AGE	39.2 years old

Wichita
35 Miles

Topeka
140 Miles

Hutchinson
27 Miles



For more information, please visit our website at www.WeigandAuctions.com or contact us at 316-262-6400.



J.P. Weigand & Sons, Inc. - Auction Division
150 N. Market Wichita, KS 67202
[WeigandAuctions.com](https://www.WeigandAuctions.com)



Kevin Howell, Auctioneer
316-292-3971 | khowell@weigand.com

Whitney Vliet Ward
316-292-3900 | wward@weigand.com

Ben Suellentrop
316-292-3911 | bsuellentrop@weigand.com

AUCTION PROCEDURE: Properties are being offered Separate & Together and subject to Seller's confirmation. Online bidding is by approval only. Bidding will remain open until 3 minutes have passed without receiving an acceptable bid. J.P. Weigand & Sons, Inc. - Auction Division reserves the right to request a proof of funds letter from a bank to participate in online bidding. BUYER'S PREMIUM: A buyer's premium of 10% of the final bid will be added to the final bid price to determine the total purchase price. AUCTION TERMS: The successful bidder shall be required to make a deposit in an amount equal to 10% of the total purchase price as earnest money in the form of Certified or Personal Check with proper identification within 24 hours of close of auction. Closing will take place on or before 30 days following the day of auction. IMPORTANT NOTICE TO ALL BIDDERS: All the information contained in this brochure was obtained from sources believed to be correct but is not guaranteed. This property will be sold "as is, where is" and bidders shall rely on their own information, judgment, and inspection of the property and records. This property will be sold subject to any applicable Federal, State, and/or Local Government Regulations. BROKER PARTICIPATION: At the completion of a successful closing, a fee of 3% of the buyer's premium will be paid by J.P. Weigand & Sons, Inc. to the broker properly registering and representing the successful bidder. Please visit [WeigandAuctions.com](https://www.WeigandAuctions.com) for a detailed explanation of Terms and Conditions.

LOT 4 - FORMER HALSTEAD MOTEL

126 E. 3RD ST.
HALSTEAD, KS

ONLINE ONLY Register & Bid online at [WeigandAuctions.com](https://www.WeigandAuctions.com)

Bidding Ends THURS., DECEMBER 1, 2022 starting at 1 PM CT



SITE SIZE
15,000± SF

ZONING
B-3




2021 TAXES
GENERALS: \$918.27

TRAFFIC COUNTS
APPROX. 12,883 VPD
ALONG MAIN & 3RD

PROPERTY HIGHLIGHTS

- Re-Development Opportunity
- 21 Units

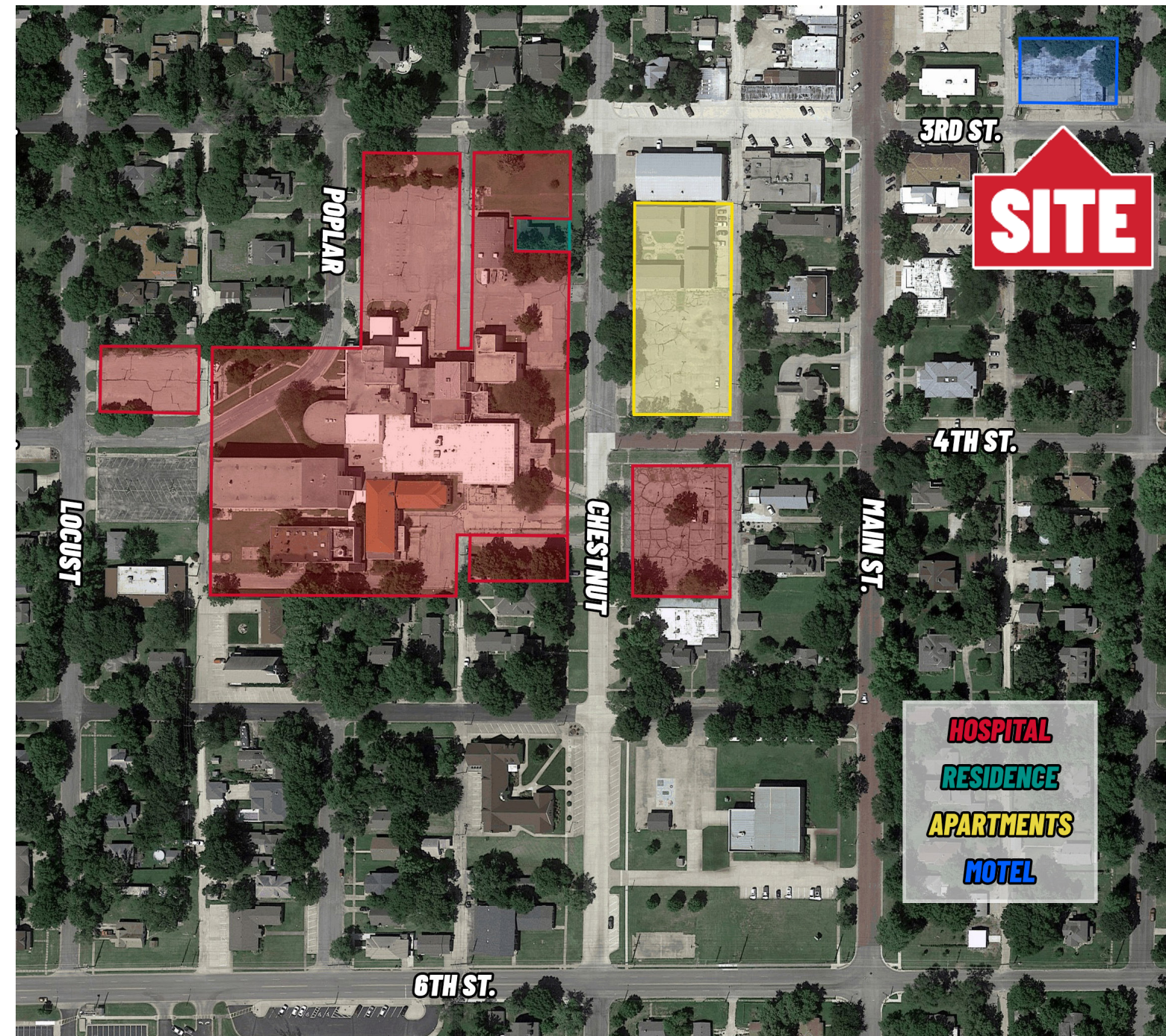
HARVEY COUNTY DEMOGRAPHICS

	POPULATION	33,817
	AVG. HH INCOME	\$58,782
	MEDIAN AGE	39.2 years old

Wichita
35 Miles

Newton
12 Miles

Hutchinson
27 Miles



For more information, please visit our website at www.WeigandAuctions.com or contact us at 316-262-6400.



J.P. Weigand & Sons, Inc. - Auction Division
150 N. Market Wichita, KS 67202
[WeigandAuctions.com](https://www.WeigandAuctions.com)



Kevin Howell, Auctioneer
316-292-3971 | khowell@weigand.com

Whitney Vliet Ward
316-292-3900 | wward@weigand.com

Ben Suellentrop
316-292-3911 | bsuellentrop@weigand.com

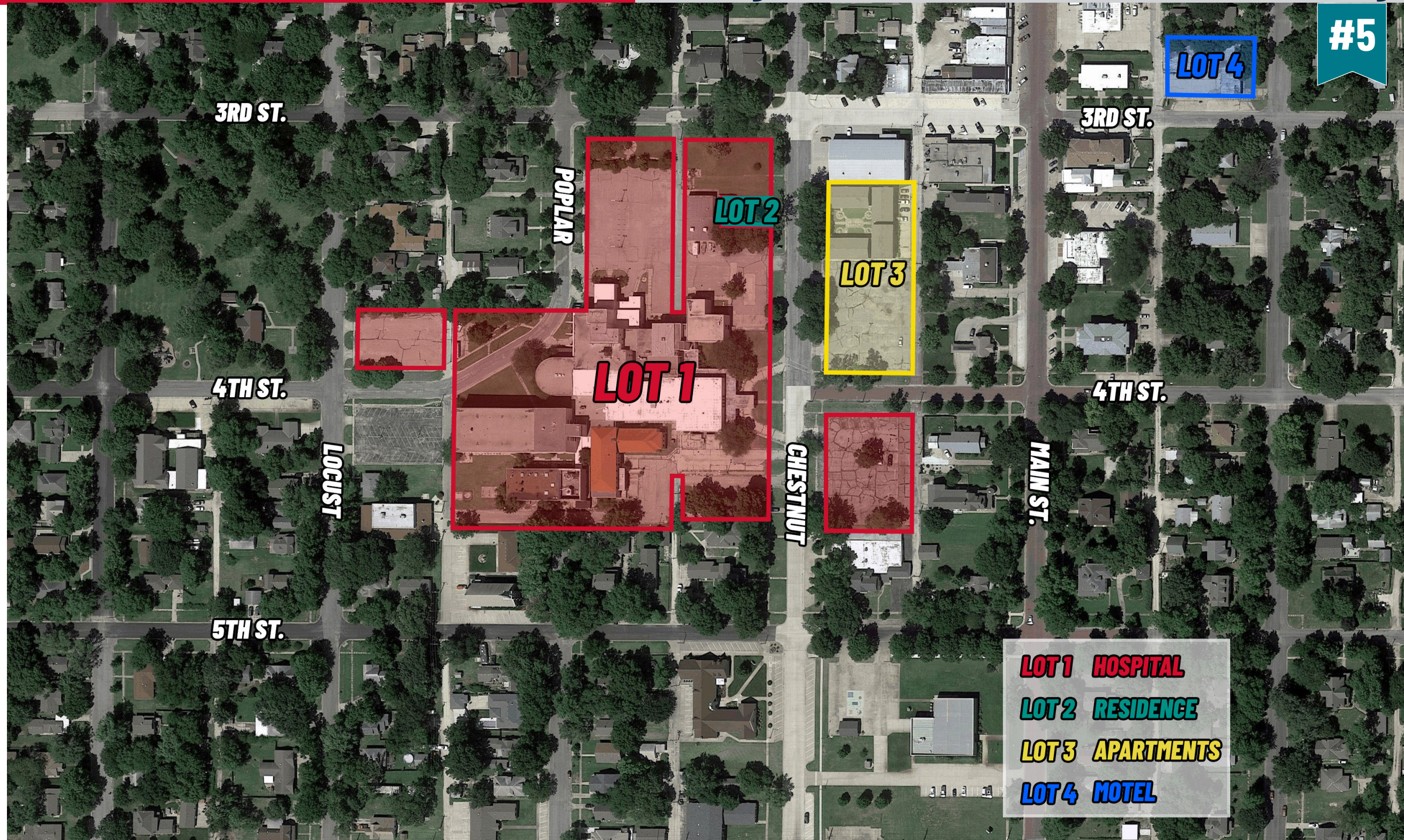
AUCTION PROCEDURE: Properties are being offered Separate & Together and subject to Seller's confirmation. Online bidding is by approval only. Bidding will remain open until 3 minutes have passed without receiving an acceptable bid. J.P. Weigand & Sons, Inc. - Auction Division reserves the right to request a proof of funds letter from a bank to participate in online bidding. BUYER'S PREMIUM: A buyer's premium of 10% of the final bid will be added to the final bid price to determine the total purchase price. AUCTION TERMS: The successful bidder shall be required to make a deposit in an amount equal to 10% of the total purchase price as earnest money in the form of Certified or Personal Check with proper identification within 24 hours of close of auction. Closing will take place on or before 30 days following the day of auction. IMPORTANT NOTICE TO ALL BIDDERS: All the information contained in this brochure was obtained from sources believed to be correct but is not guaranteed. This property will be sold "as is, where is" and bidders shall rely on their own information, judgment, and inspection of the property and records. This property will be sold subject to any applicable Federal, State, and/or Local Government Regulations. BROKER PARTICIPATION: At the completion of a successful closing, a fee of 3% of the buyer's premium will be paid by J.P. Weigand & Sons, Inc. to the broker properly registering and representing the successful bidder. Please visit [WeigandAuctions.com](https://www.WeigandAuctions.com) for a detailed explanation of Terms and Conditions.

LOT 5 - ALL PARCELS

HALSTEAD MULTI-PARCEL
AUCTION

ONLINE ONLY Register & Bid online at [WeigandAuctions.com](https://www.WeigandAuctions.com)

Bidding Ends THURS., DECEMBER 1, 2022 starting at 2 PM CT



J.P. Weigand & Sons, Inc. - Auction Division
150 N. Market Wichita, KS 67202
[WeigandAuctions.com](https://www.WeigandAuctions.com)



Kevin Howell, Auctioneer
316-292-3971 | khowell@weigand.com

Whitney Vliet Ward
316-292-3900 | wward@weigand.com

Ben Suellentrop
316-292-3911 | bsuellentrop@weigand.com



AUCTION PROCEDURE: Properties are being offered Separate & Together and subject to Seller's confirmation. Online bidding is by approval only. Bidding will remain open until 3 minutes have passed without receiving an acceptable bid. J.P. Weigand & Sons, Inc. - Auction Division reserves the right to request a proof of funds letter from a bank to participate in online bidding. BUYER'S PREMIUM: A buyer's premium of 10% of the final bid will be added to the final bid price to determine the total purchase price. AUCTION TERMS: The successful bidder shall be required to make a deposit in an amount equal to 10% of the total purchase price as earnest money in the form of Certified or Personal Check with proper identification within 24 hours of close of auction. Closing will take place on or before 30 days following the day of auction. IMPORTANT NOTICE TO ALL BIDDERS: All the information contained in this brochure was obtained from sources believed to be correct but is not guaranteed. This property will be sold "as is, where is" and bidders shall rely on their own information, judgment, and inspection of the property and records. This property will be sold subject to any applicable Federal, State, and/or Local Government Regulations. BROKER PARTICIPATION: At the completion of a successful closing, a fee of 3% of the buyer's premium will be paid by J.P. Weigand & Sons, Inc. to the broker properly registering and representing the successful bidder. Please visit [WeigandAuctions.com](https://www.WeigandAuctions.com) for a detailed explanation of Terms and Conditions.